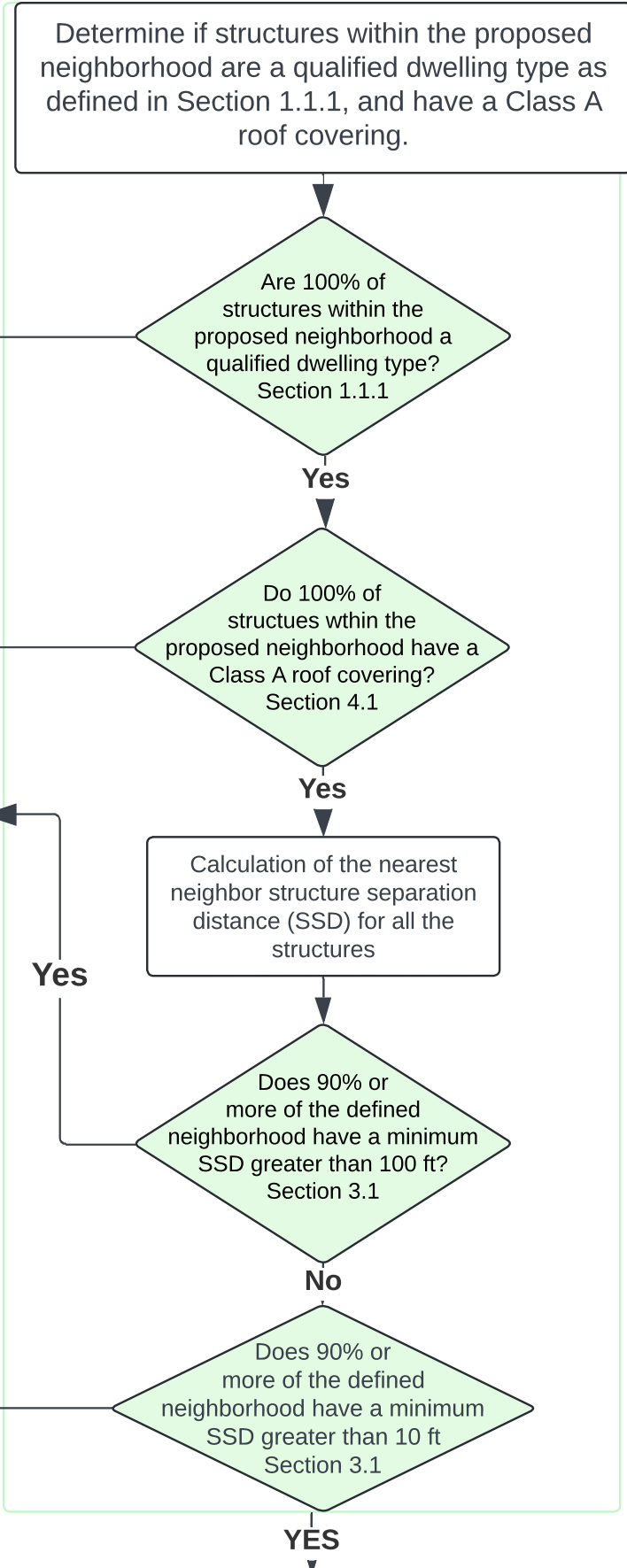


Neighborhood Definition

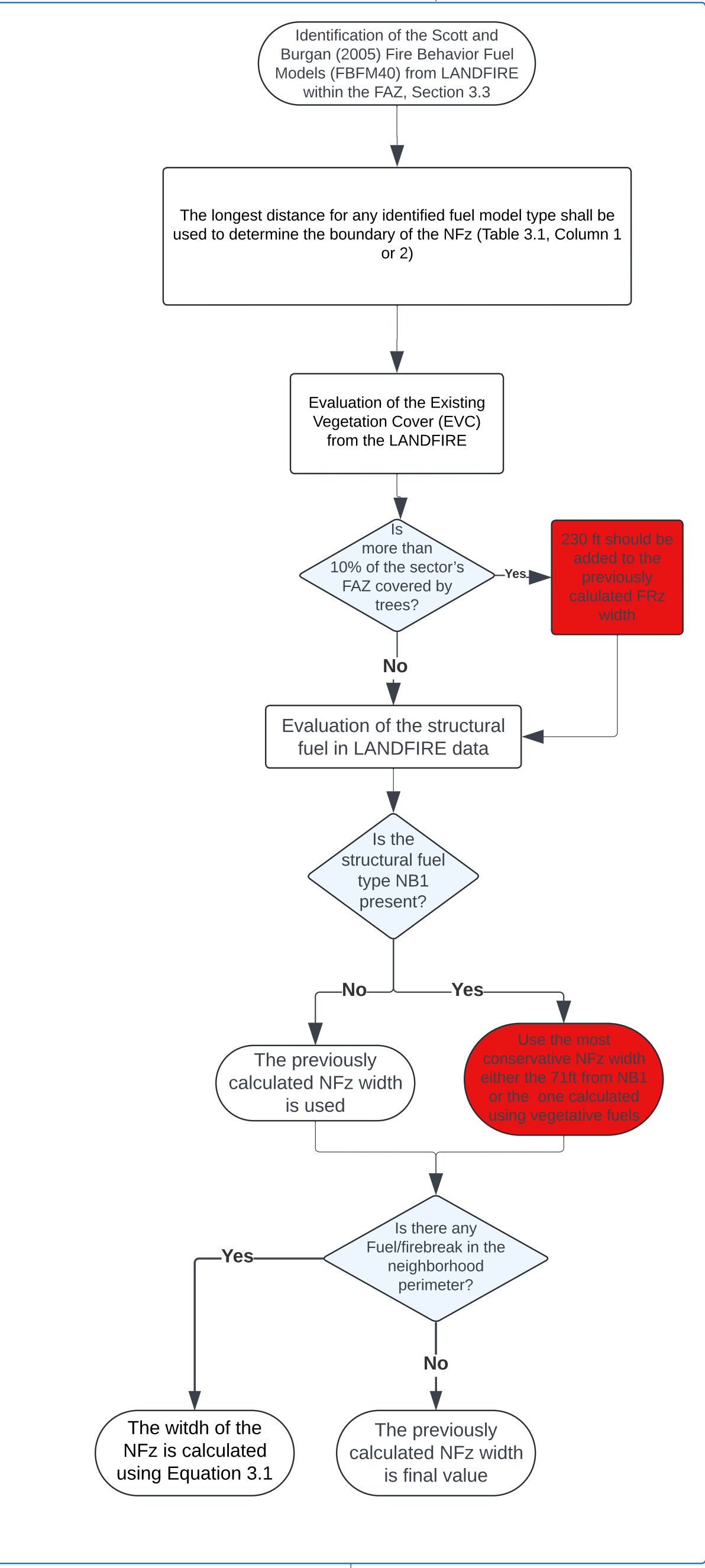
Evaluation of the Applicability of the Standard



Flame fuel assessment zone (FAZ): The buffer area extending 0.25 miles radially outward from the boundary of the defined neighborhood Section 3.2 and Figure 3.1.

Flame Fuel Assessment per sector

Neighborhood Flame Zone (NFz) Calculation

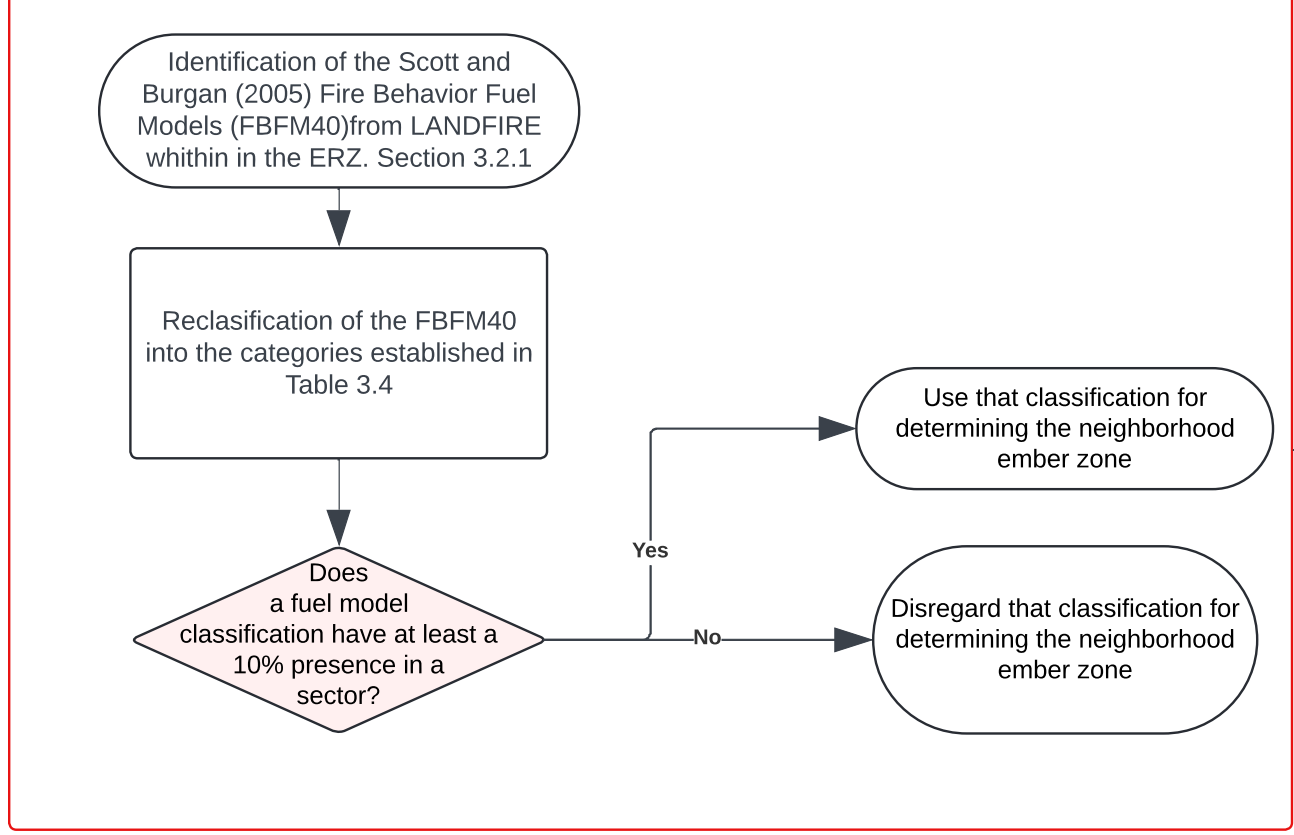


Homes within the Neighborhood Flame zone must be at least WFPH+ and the structures cannot have any connective fuel pathways

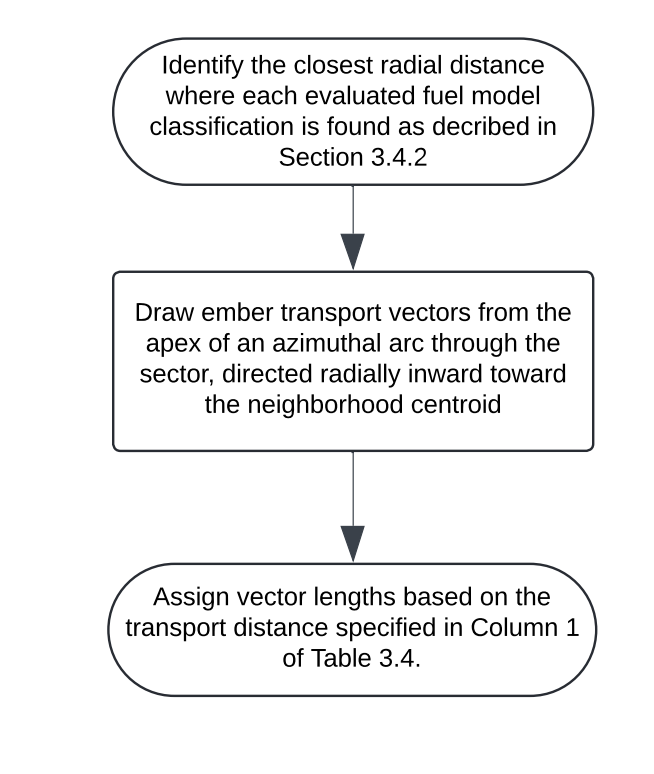
Ember assesment in the External Fuel Sector: The buffer area extending 4.25 miles radially outward from the boundary of the defined neighborhood Section 3.2 and Figure 3.2

Ember Fuel Assessment per sector

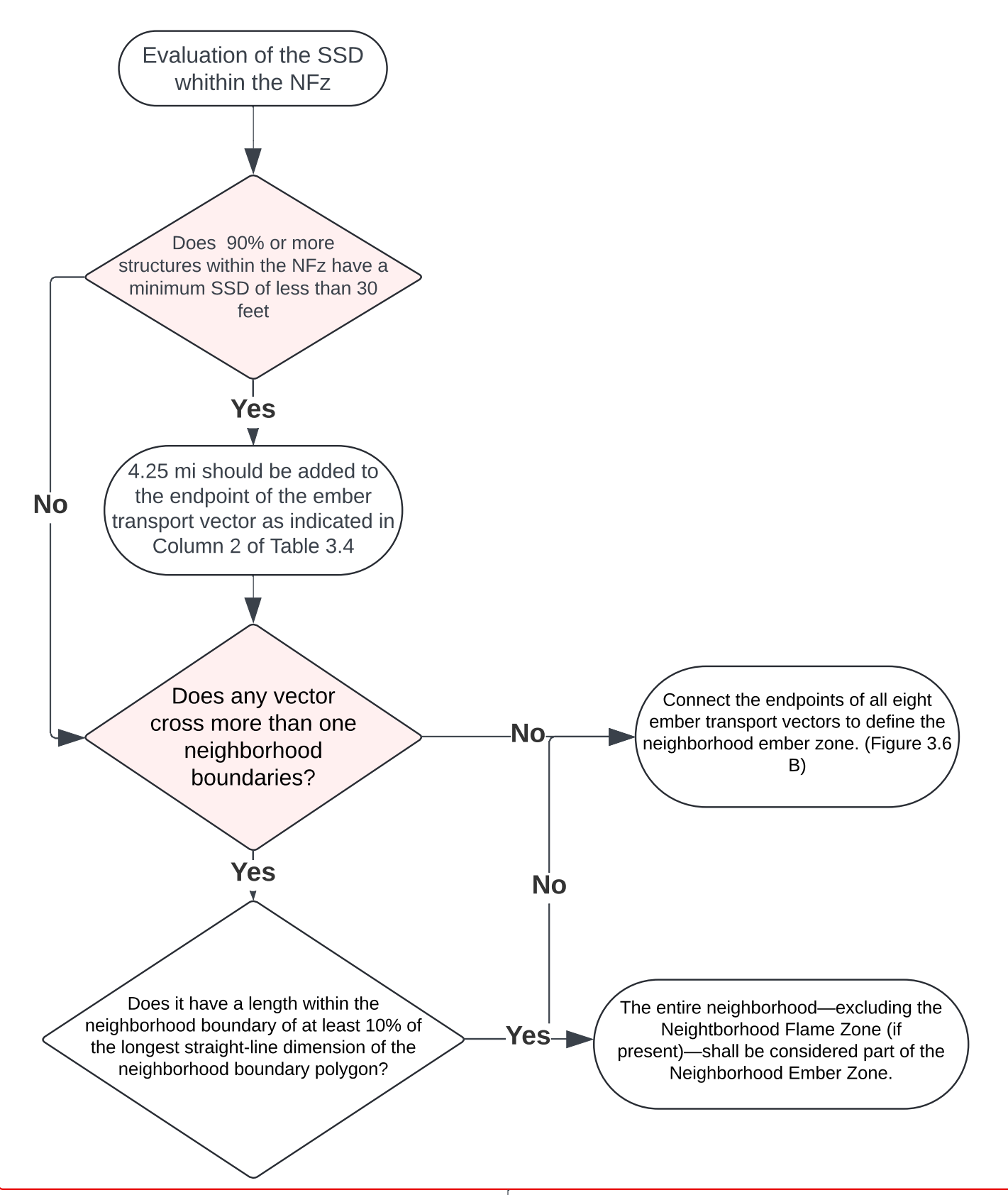
Ember External Fuel Model



Draw ember transport vectors



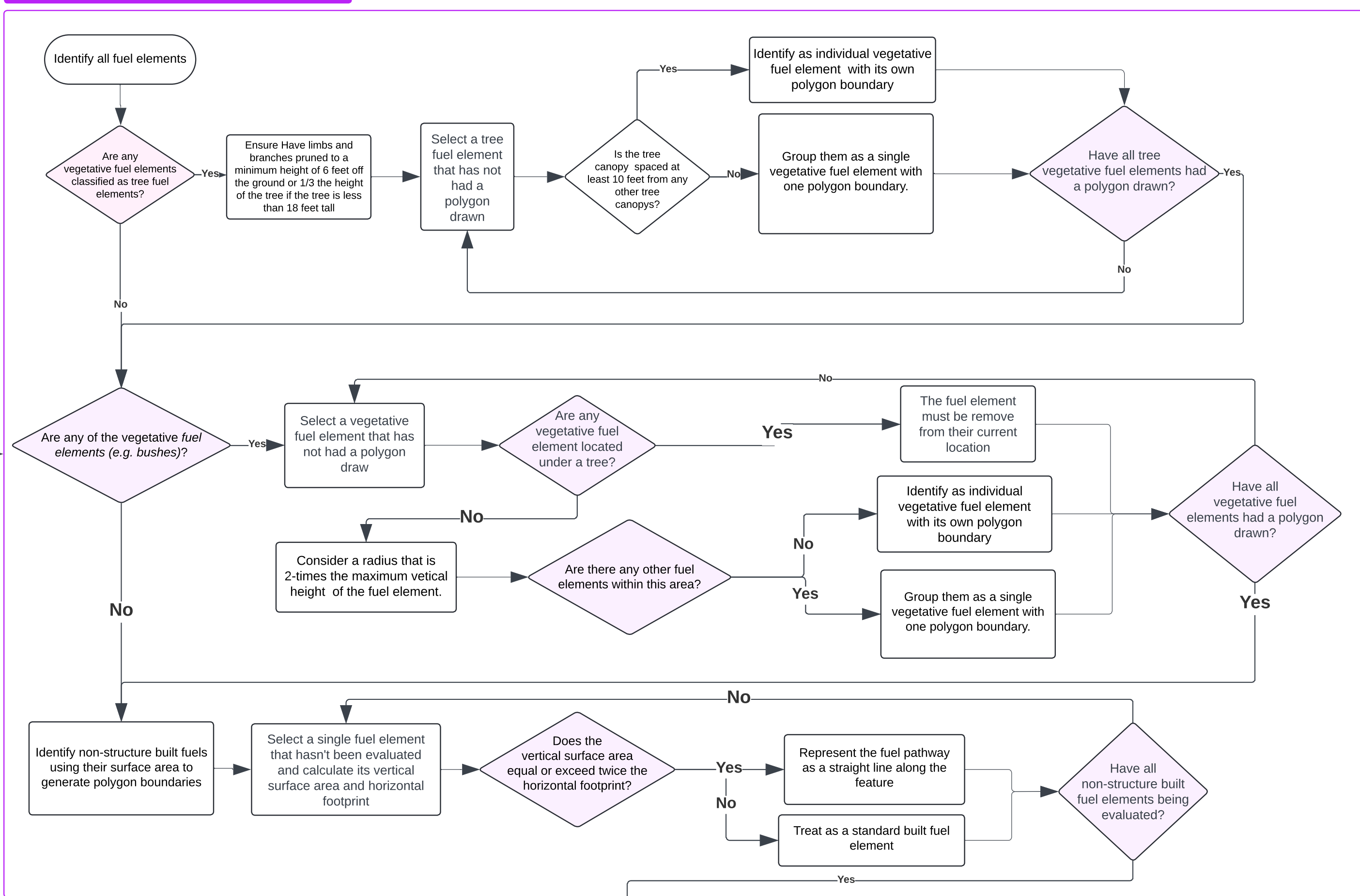
Neighborhood Ember Zone (NEz) calculation



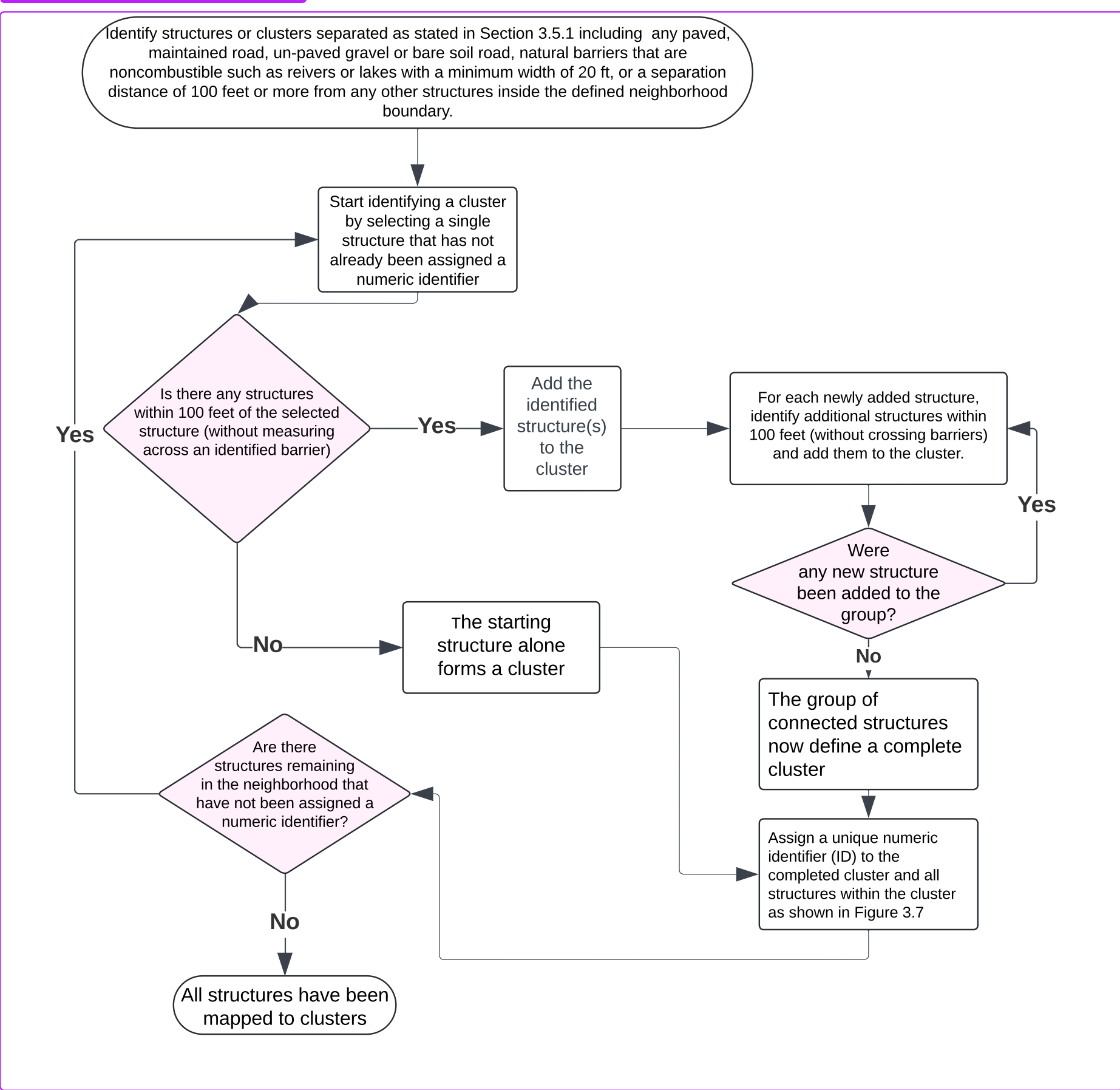
To cluster process

Homes within the Neighborhood Ember Zone must be at least WFPH

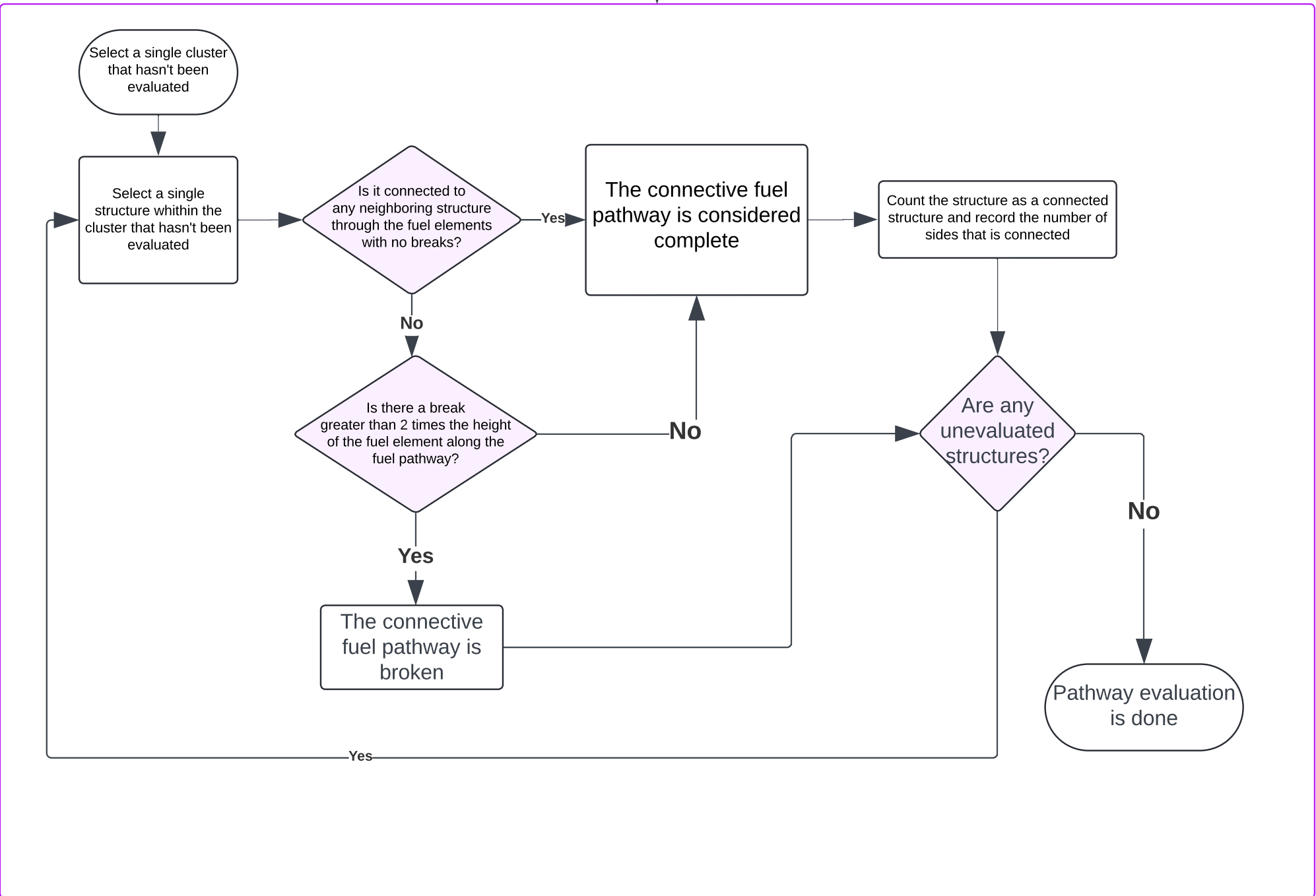
Fuel nodes identification in all the clusters



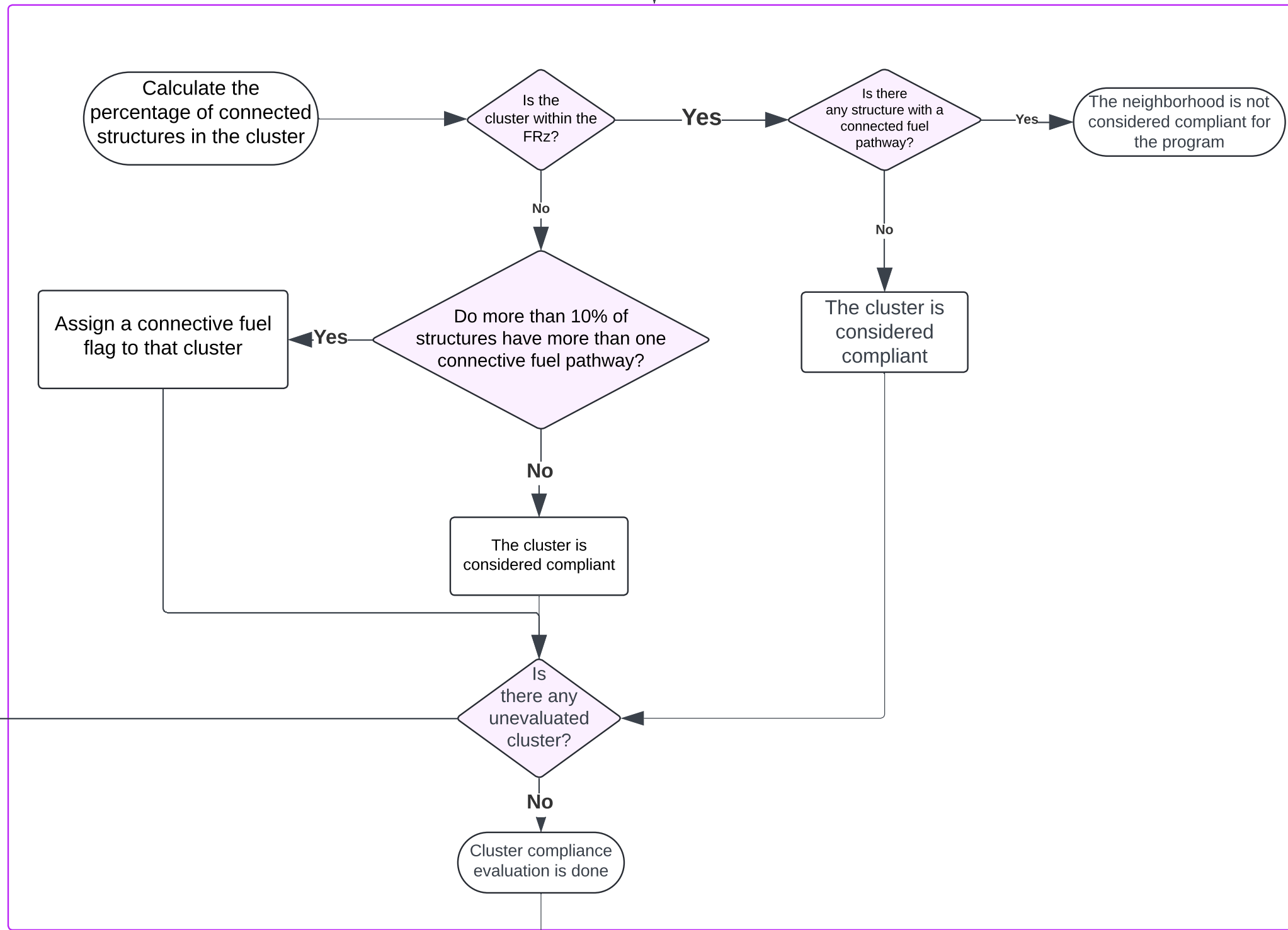
Cluster identification process



Connective Fuel Pathways evaluation



Cluster compliance



Determine the total number of structures within clusters that have been assigned a connective fuel flag

