

Fire Competition Final

Table of Contents

Tier One- Unlimited Budget _____ 3

Tier Two- \$10,000 Budget _____ 12

Tier Three- \$5,000 Budget _____ 20

Alternative Zone 0 & Process _____ 28

Tier One

Unlimited Budget

For this design intervention we assumed the following:

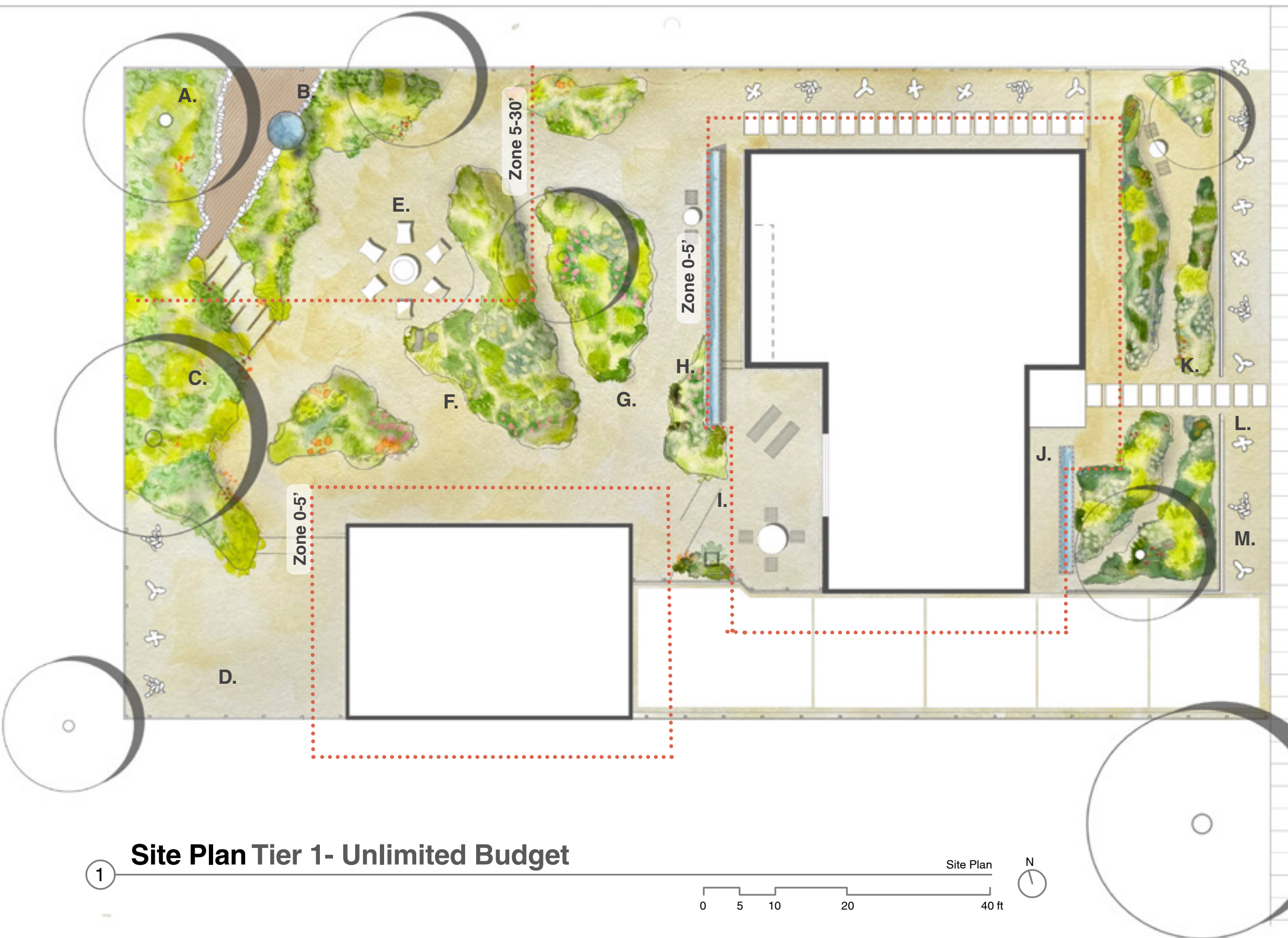
- 1. All fencing redesigned**
- 2. Gravel groundcover for all exterior spaces**
- 3. Existing trees that do not follow the defensible space guidelines have been removed**
- 4. Our design includes new furnishings that meet defensible space material guidelines**
- 5. Decking adjacent to house is removed**

Assumptions

The Unlimited Budget takes into consideration all exterior spaces of the property. The front yard has been reimagined by removing all hedgerows and instead incorporating a cinder breeze block wall to allow for better curb appeal. In addition, the wooden fencing along the perimeter and backyard have been redesigned using corrugated aluminum fencing. All groundcover and pathways are designed using granite gravel with cement steps along the side corridor and the entrance of the home.

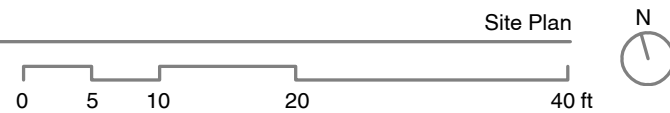
Additionally, we have introduced two barrier reflective pools along the 0-5' zone of both the front and back spaces to not only embrace the openness in the zone, but to also provide an additional safety future for fire protection with the use of water. We've also assumed that all tree removal costs are not included in our overall budget.

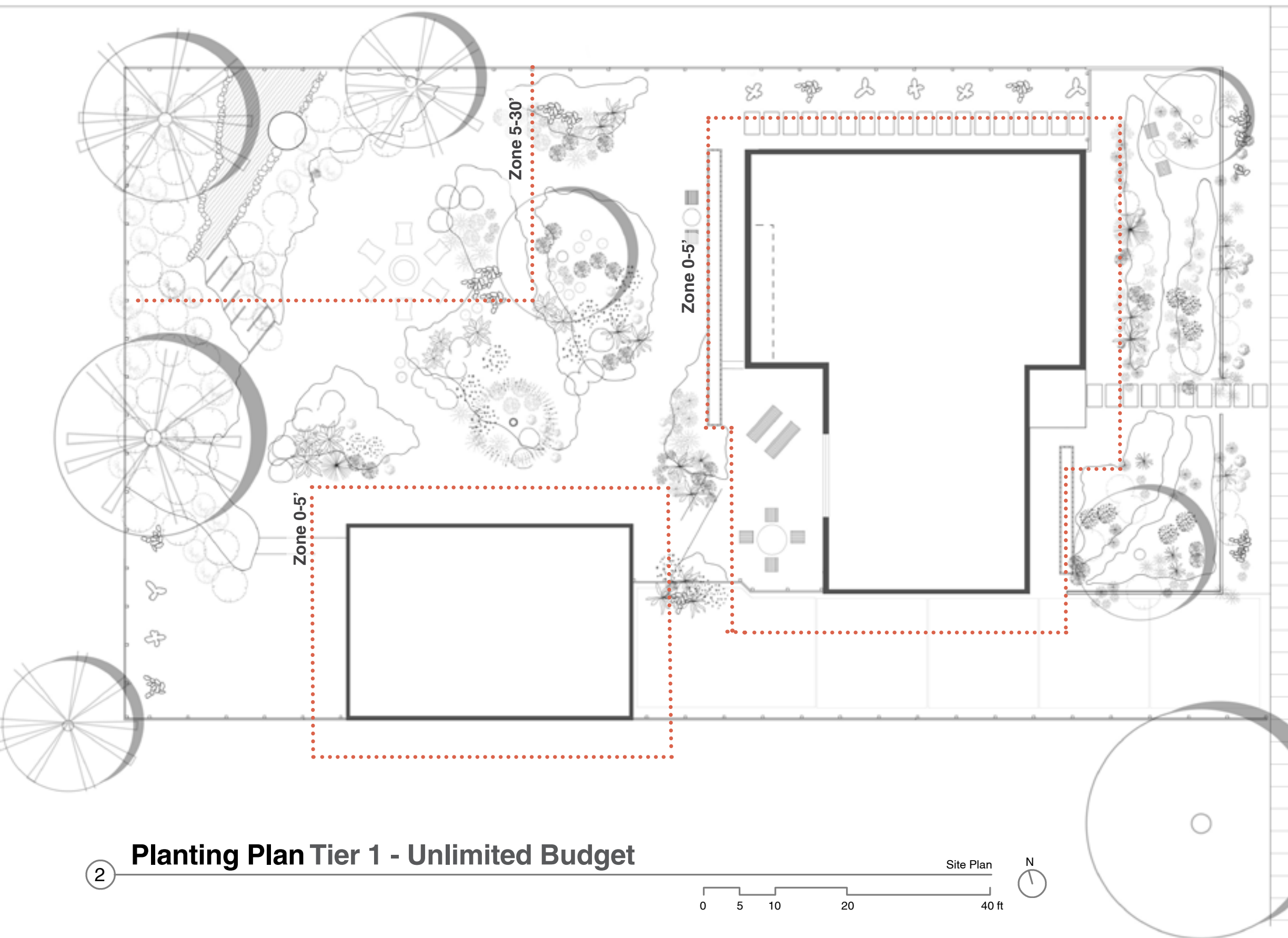
Renders finished in Lumion



- A.** Terraced Shaded Garden
- B.** Soaking Tub & Redwood Deck
- C.** Existing Trees
- D.** Aluminum Fencing
- E.** Backyard Firepit
- F.** Pollinator Garden
- G.** Meander Path
- H.** 0-5' Zone Reflection Pool
- I.** Metal Outdoor Furniture
- J.** 0-5' Zone Reflection Pool
- K.** New Garden Entance
- L.** Breeze Block Edging
- M.** Edge Offset From Curb

1 Site Plan Tier 1- Unlimited Budget





Trees

- Existing Sequoia sempervirens
- Parkinsonia 'Desert Museum'
- Quercus lobata

Shrubs

- Mimulus Jelly Bean
- Muhlenbergia rigens
- Artemisia schmidtiana 'Silver Mound'
- Carex divulsa
- Acacia cognata 'Cousin Itt'
- Convolvulus cneorum
- Westringia 'Wynabbie Highlight'
- Nepeta 'Walker's Low'
- Polystichum munitum

Succulents

- Yucca rostrata
- Agave x 'Blue Glow'
- Hesperaloe parviflora Brakelights
- Agave 'Mateo'

Groundcover/ Perennials

- Eschscholzia californica
- Stachys byzantina
- Echinacea Butterfly 'Cleopatra'
- Senecio mandraliscae

Tier One Budget

Full details on budget items can be viewed at our [Fire Competition Materials List](#)

Hardscaping and Supplies				
ITEM	Project Location	Quantity Needed	Itemized Cost	Total Cost
Corrugated Fence (linear feet)	Perimeter	396	\$ 30.00	\$11,880
Brick Border (block) 16in x 6in	Front Border 103' x 28"	161	\$ 2.59	\$417
Cement Steps 24"x36"	Front and Side	19	\$ 54.50	\$1,036
CorTen Steel Strip	Backyard	1	\$104.80	\$105
Corten Steel Strip	Water Fountain	8	\$150.00	\$1,200
Decomposed Granite (yard)	See calculation	60	\$116.00	\$6,960
Crushed Granite (yard)	See calculation	104	\$116.00	\$12,064
Soil (yards) General Landscape™ Soil	See calculation	61	\$ 46.95	\$2,864
Granite Boulders 2x2		4	\$175.00	\$700
Granite Boulders 3x3		3	\$375.00	\$1,125
Redwood Lumber (10ft beams)	Back Slope	4	\$ 21.08	\$84
Redwood Lumber (2"x6"x10')	Back Slope Deck	15	\$ 96.28	\$1,444
Cedar Hot Tub	Back Slope	1	n/a	\$ 12,060.90
Outdoor Cafe Set (1 Table, 2 Chairs)	Backyard & Front	2	\$996.00	\$ 1,992.00
Outdoor Chaise	Back Deck	2	\$796	\$ 1,592.00
Palisade Dining Chair	Back Deck	4	\$316	\$ 1,264.00
Campfire Chair	Campfire	6	\$239	\$ 1,434.00
				\$58,222

Planting List / Front yard								
Plant Name	Height	Width	Size	Sun Requirement	Water	Quantity	Itemized Cost	Total Cost
Parkinsonia 'Desert Museum'	20'	20'	15 gal	Full Sun	Low/Mod	1	\$ 95.99	\$ 95.99
Yucca rostrata	12-15'	6-8'	10/15 gal	Full Sun	Low/Mod	2	\$ 175.00	\$ 350.00
Muhlenbergia rigens	4'	3'	1 gal	Full/Partial	Low/Mod	14	\$ 7.99	\$ 111.86
Convolvulus cneorum	3'	5'	1 gal	Full Sun	Mod	7	\$ 7.99	\$ 55.93
Agave attenuata 'Ray of Light'	4'	3'	10/15 gal	Full/Partial	Low/Mod	6	\$ 39.99	\$ 239.94
Agave 'Blue Glow'	2'	3'	3/5 gal	Full/Partial	Low/Mod	4	\$ 29.99	\$ 119.96
Mimulus Jolly Bean	2'	2'	1 gal	Full/Partial	Low/Mod	10	\$ 7.99	\$ 79.90
Artemisia schmidtiana 'Silver Mound'	2'	5'	1 gal	Full/Partial	Low/Mod	11	\$ 6.99	\$ 76.89
Nepeta 'Walker's Low'	2'	3'	1 gal	Full/Partial	Low/Mod	30	\$ 7.99	\$ 239.70
Salvia spathacea	2'	3'		Full/Partial	Low/Mod	24	\$ 6.99	\$ 167.76
Hesperaloe parviflora Brakelights	2'	2'	1 gal	Full Sun	Mod	23	\$ 18.99	\$ 436.77
Senecio mandraliscae	2'			3/5 Full/Partial		25	\$ 23.99	\$ 599.75
Stachys byzantina	1'	4'	1 gal	Full/Partial	Low/Mod	20	\$ 9.99	\$ 199.80
Erigeron karvinskianus	1'	4'	1 gal	Full/Partial	Low/Mod	6	\$ 6.99	\$ 41.94
								\$2,816.19

Planting List / Backyard								
Plant Name	Height	Width	Size	Sun Requirement	Water	Quantity	Itemized Cost	Total Cost
Parkinsonia 'Desert Museum'	20'	20'	15 gal	Full Sun	Low/Mod	1	\$ 95.99	\$ 95.99
Yucca rostrata	12-15'	6-8'	10/15 gal	Full Sun	Low/Mod	2	\$ 175.00	\$ 350.00
Lemon 'Improved Meyer'	8'		5 gal	Full Sun	Mod	1	\$ 49.99	\$ 49.99
Westringia 'Wynabbie Highlight'	4'	4'	5 gal	Full/Partial	Low/Mod	12	\$ 23.99	\$ 287.88
Muhlenbergia rigens	4'	4'	1 gal	Full/Partial	Low/Mod	36	\$ 7.99	\$ 287.64
Polycichum munitum	4'	4'	1 gal	Partial	Low/Mod	29	\$ 10.99	\$ 318.71
Acacia cognata	3'	5'	1 gal	Full Sun	Low	22	\$ 21.99	\$ 483.78
Agave attenuata 'Ray of Light'	4'	3'	10/15 gal	Full/Partial	Low/Mod	7	\$ 39.99	\$ 279.93
Agave 'Blue Glow'	2'	3'	3/5 gal	Full/Partial	Low/Mod	8	\$ 29.99	\$ 239.92
Mimulus Jelly Bean	2'	2'	1 gal	Full/Partial	Low/Mod	15	\$ 7.99	\$ 119.85
Salvia spathacea	2'	3'	1 gal	Full/Partial	Low/Mod	11	\$ 6.99	\$ 76.89
Artemisia schmidtiana 'Silver Mound'	2'	5'	1 gal	Full/Partial	Low/Mod	14	\$ 6.99	\$ 97.86
Nepeta 'Walker's Low'	2'	3'	1 gal	Full/Partial	Low/Mod	15	\$ 7.99	\$ 119.85
Hesperaloe parviflora Brakelights	2'	2'	1 gal	Full Sun	Mod	6	\$ 18.99	\$ 113.94
Senecio mandraliscae	2'			3/5 Full/Partial		18	\$ 23.99	\$ 431.82
Stachys byzantina	1'	4'	3/5 gal	Full/Partial	Low/Mod	5	\$ 9.99	\$ 49.95

Stachys byzantina	1'	4'	3/5 gal	Full/Partial	Low/Mod	5	\$ 9.99	\$ 49.95
Eschscholzia californica	1'	1'	1 gal	Full Sun	Low/Mod	15	\$ 7.99	\$ 119.85
Carex divulsa	1'	2'	1 gal	Full/Partial	Mod	13	\$ 7.99	\$ 103.87
Erigeron karvinskianus	1'	4'	1 gal	Full/Partial	Low/Mod	7	\$ 6.99	\$ 48.93
								\$3,676.65

Total Cost- \$64,719

Tier One Curb Appeal



Corrugated aluminum fencing

Sidewalk entrance for improved circulations

Fire safe planting, grasses pruned in fire season

Edge moved five feet from sidewalk to allow for planting

Breeze block edging

Tier One Reflection & Entrance

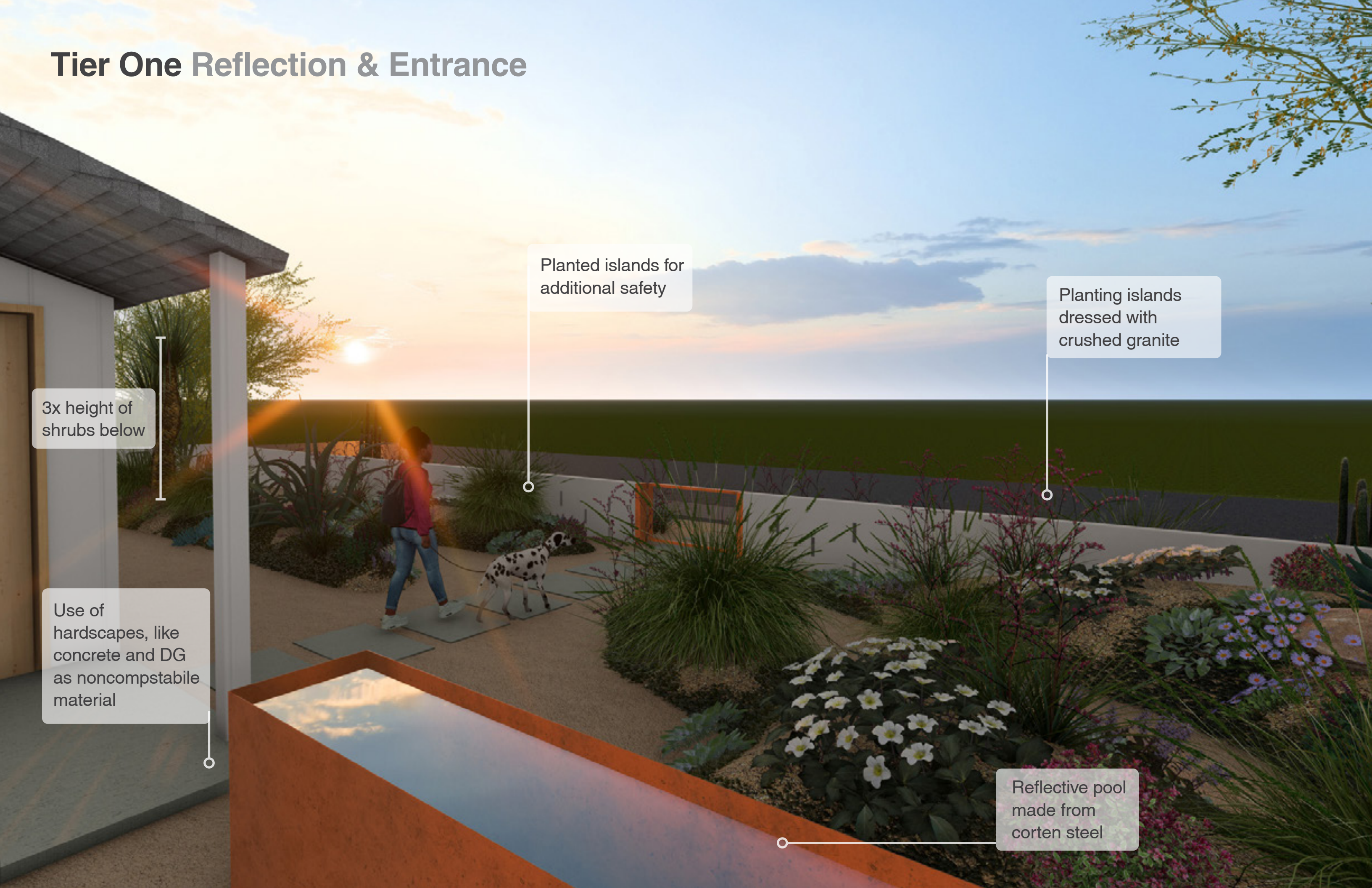
3x height of shrubs below

Use of hardscapes, like concrete and DG as noncompstable material

Planted islands for additional safety

Planting islands dressed with crushed granite

Reflective pool made from corten steel



Tier One Terraced Quiet Zone

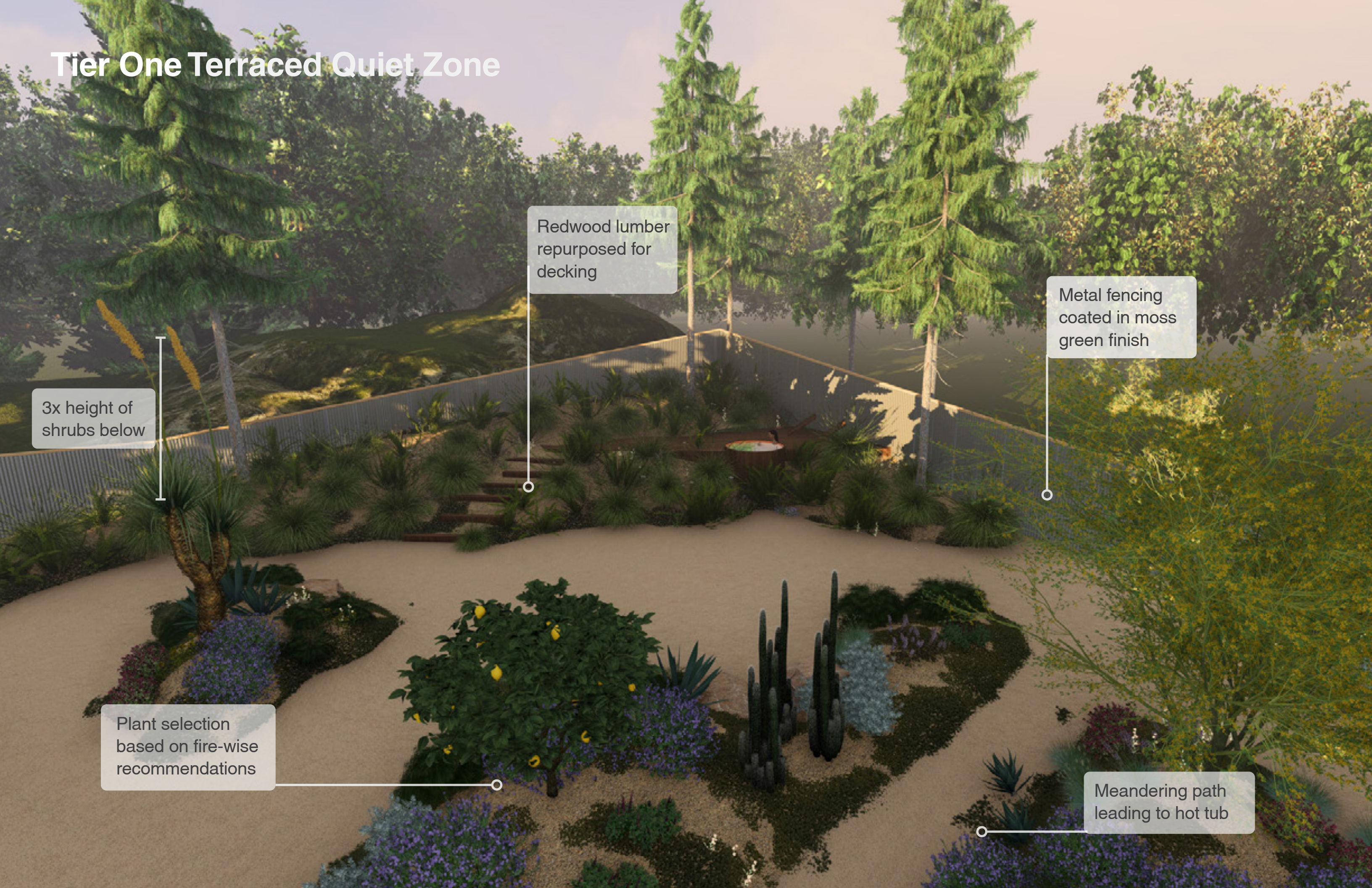
3x height of shrubs below

Redwood lumber repurposed for decking

Metal fencing coated in moss green finish

Plant selection based on fire-wise recommendations

Meandering path leading to hot tub



Tier One Outdoor Dining

Water feature divides 0-5' space, adding serene sounds while adding a protective barrier

Metal furniture to replace existing ones

Corten steel step accents

Existing mulch and lawn replaced with decomposed granite

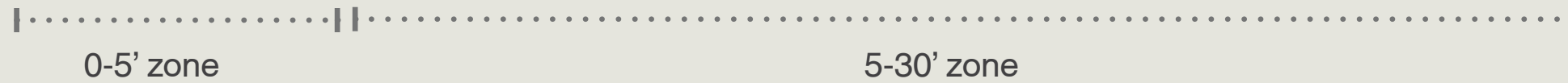


Tier One Section

Cement fiber siding

Mounded islands for planting

Sidewalk met with decomposed granite and planting



Tier Two

\$10,000 Budget

For this design intervention we assumed the following:

- 1. Design prioritizes curb appeal**
- 2. Fence remains the same for backyard space, while only budgeting cost for front yard fencing and fencing adjacent to buildings.**
- 3. Stone pathway is much more limited and utilizes pea gravel vs crushed granite**

Assumptions

The design intervention for the \$10,000 budget mainly focuses on curb appeal, with a smaller focus on the backyard space. While the front yard keeps the same design and plant layout as Tier 1, the backyard spaces utilizes the existing lawn while incorporating large planting clusters throughout.

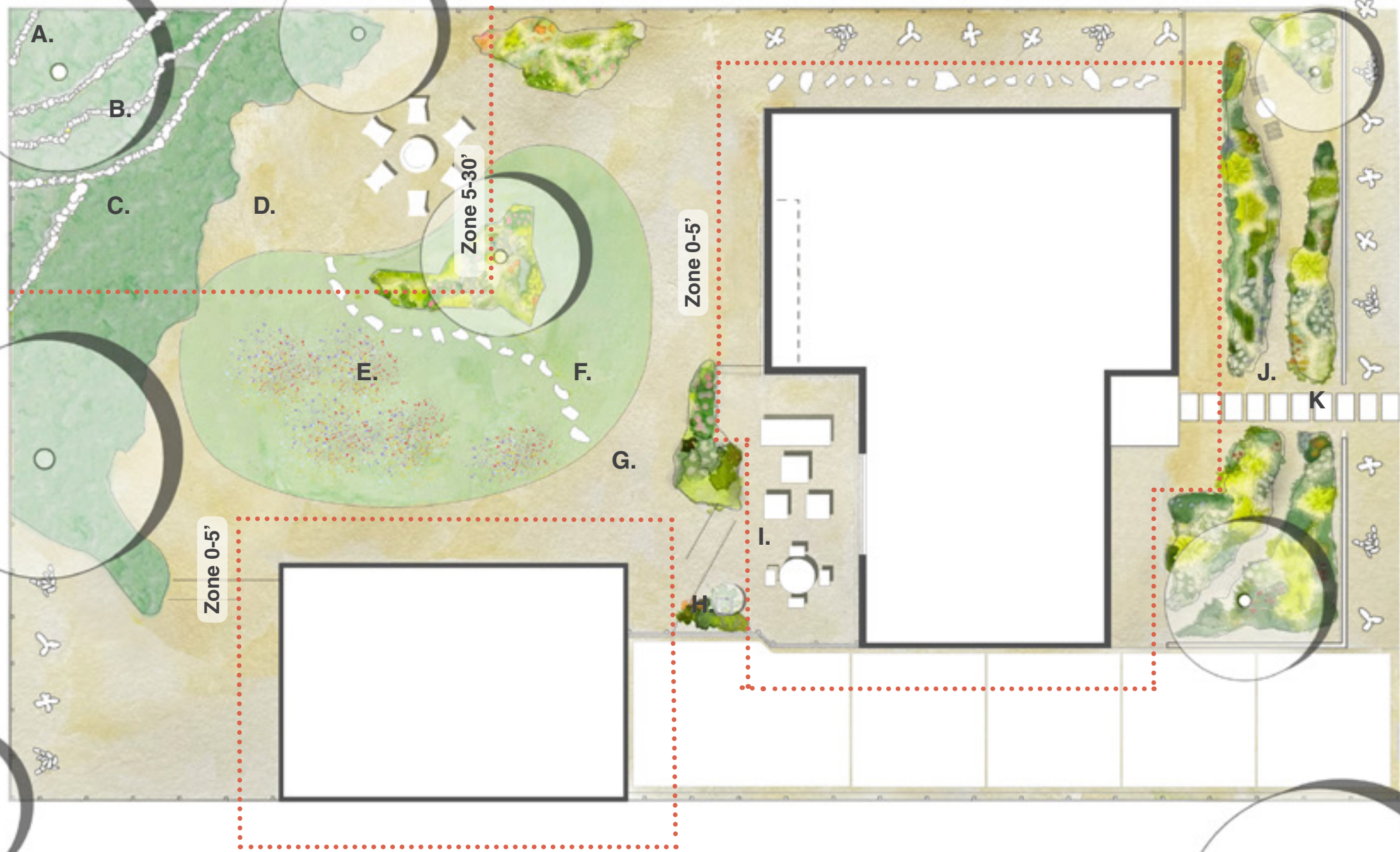
In Tier 2, we do not elevate the planting clusters as seen in Tier 1. In addition, because of the budget, it

is assumed the backyard fencing remains the same, while the front of the property proceeds with a fence redesign using the cinder breezeway wall.

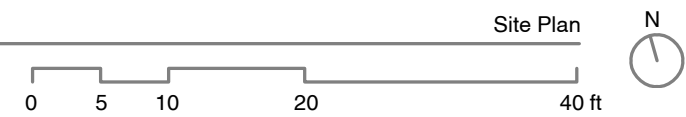
Furthermore, the design utilizes peagravel gravel for the pathways instead of granite and the use of such material is more limited and selective.

Renders finished in Lumion

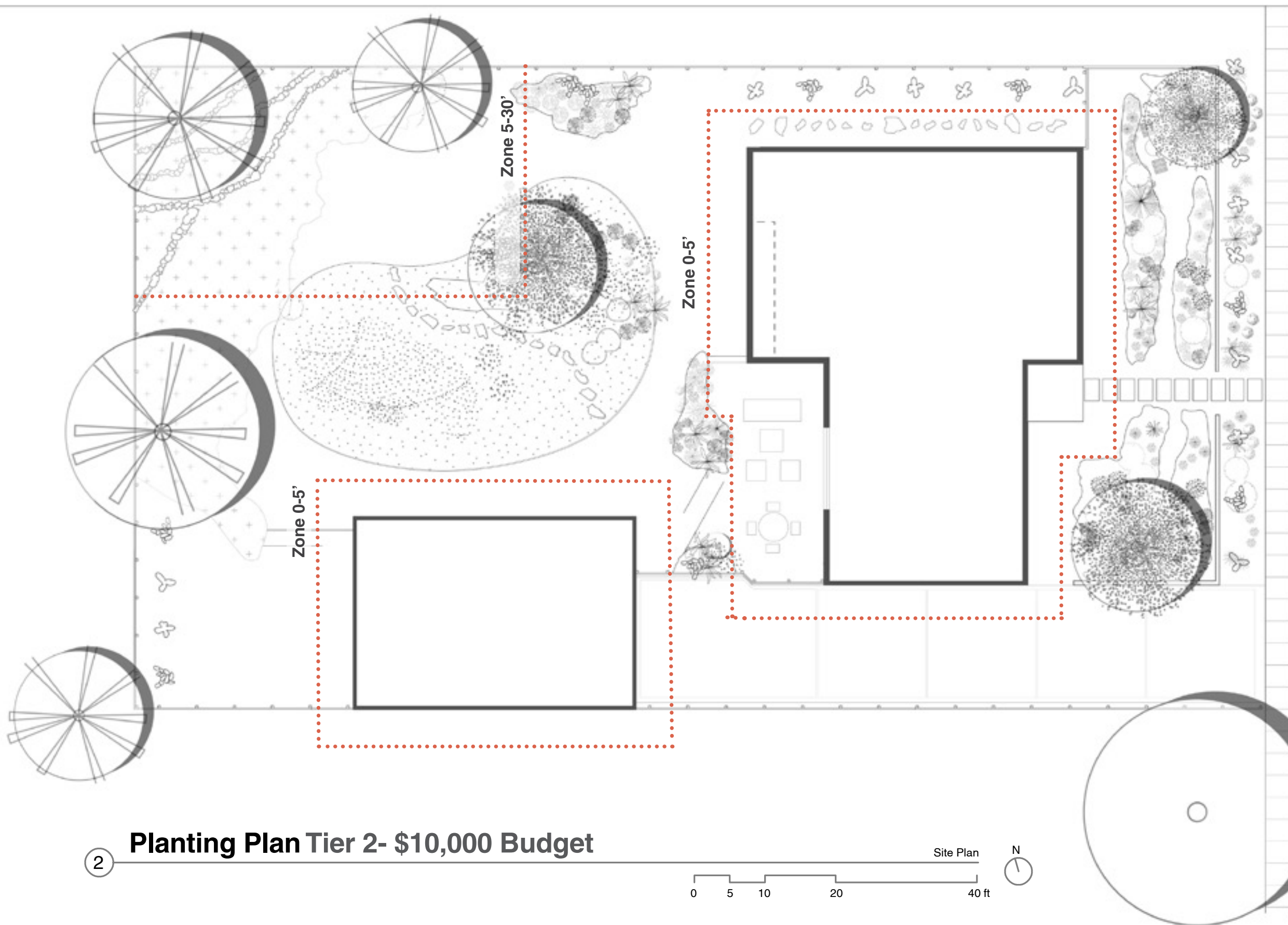
- A.** Existing Fence
- B.** Existing Trees, Canopy 10' Spacing
- C.** Existing Terraced Planting
- D.** Backyard Firepit
- E.** Wildflowers & Existing Lawn
- F.** Repurposed Stones
- G.** 0-5' Zone Gravel Border
- H.** Breeze Block Fence
- I.** Gravel Terrace
- J.** Pollinator Garden
- K.** New Garden Entrance
- L.** Breeze Block Offset From Curb



Site Plan Tier 2- \$10,000 Budget



1



Trees

- Existing Sequoia sempervirens
- Parkinsonia 'Desert Museum'
- Quercus lobata

Shrubs

- Mimulus Jelly Bean
- Muhlenbergia rigens
- Artemisia schmidtiana 'Silver Mound'
- Carex divulsa
- Acacia cognata 'Cousin Itt'
- Convolvulus cneorum
- Westringia 'Wynabbie Highlight'
- Nepeta 'Walker's Low'
- Polystichum munitum

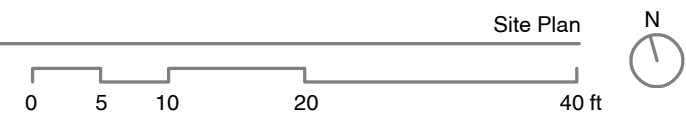
Succulents

- Yucca rostrata
- Agave x 'Blue Glow'
- Hesperaloe parviflora Brakelights
- Agave 'Mateo'

Groundcover/ Perennials

- Eschscholzia californica
- Stachys byzantina
- Echinacea Butterfly 'Cleopatra'
- Senecio mandraliscae
- Wildflower see bombs

2 Planting Plan Tier 2- \$10,000 Budget



Tier Two Budget

Full details on budget items can be viewed at our [Fire Competition Materials List](#)

Hardscaping and Supplies					
ITEM	Project Location	Description	Quantity Needed	Itemized Cost	Total Cost
Brick Fence fire zone (block)16in x 8in	75 ft	Made of cinder block	504	\$ 2.59	\$1,305
Brick Border (block)16in x 8in	Front Border 100' x 28"	Made of cinder block	161	\$ 2.50	\$417
Cement Steps 24"x36"	Front and Side	Concrete slab	10	\$ 54.50	\$545
Corten Steel Strip	Backyard	Stops near patio	1	\$104.00	\$105
Corten Steel Strip	Water Fountain	Accent Strips		\$150.00	\$0
Decomposed Granite (yard)	See calculation	Top Cover	66	\$59.50	\$3,927
Crushed Granite (yard)	See calculation	Top Cover	0	\$116.00	\$0
Granite Boulders 2x2			6	\$175.00	\$1,050
					\$7,349

Planting List / Front yard								
Plant Name	Height	Width		Sun Requirement	Water	Quantity	Itemized Cost	Total Cost
Parkinsonia 'Desert Museum	20'	20'	15 gal	Full Sun	Low/Mod	2	\$ 95.99	\$ 191.98
Yucca rostrata	12-15'	6-8'	10/15 gal	Full Sun	Low/Mod	1	\$ 175.00	\$ 175.00
Muhlenbergia rigens	4'	3'	1 gal	Full/Partial	Low/Mod	6	\$ 7.99	\$ 47.94
Convolvulus cneorum	3'	5'	1 gal	Full Sun	Mod	6	\$ 7.99	\$ 47.94
Agave 'Blue Glow'	2'	3'	3/5 gal	Full/Partial	Low/Mod	5	\$ 29.99	\$ 149.95
Mimulus Jelly Bean	2'	2'	1 gal	Full/Partial	Low/Mod	8	\$ 7.99	\$ 63.92
Artemisia schmidtiana 'Silver Mound	2'	5'	1 gal	Full/Partial	Low/Mod	5	\$ 6.99	\$ 34.95
Nepeta 'Walker's Low	2'	3'	1 gal	Full/Partial	Low/Mod	15	\$ 7.99	\$ 119.85
Hesperaloe parviflora Brakelights	2'	2'	1 gal	Full Sun	Mod	9	\$ 18.99	\$ 170.91
Senecio mandraliscae	2'		3/5	Full/Partial	Low/Mod	10	\$ 23.99	\$ 239.90
Stachys byzantina	1'	4'	1 gal	Full/Partial	Low/Mod	15	\$ 9.99	\$ 149.85
								\$1,392.19

Planting List / Backyard								
Plant Name	Height	Width	Size	Sun Requirement	Water	Quantity	Itemized Cost	Total Cost
Parkinsonia 'Desert Museum	20'	20'	15 gal	Full Sun	Low/Mod	1	\$ 95.99	\$ 95.99
Yucca rostrata	12-15'	6-8'	10/15 gal	Full Sun	Low/Mod	1	\$ 175.00	\$ 175.00
Westringia 'Wynabbie Highlight'	4'	4'	5 gal	Full/Partial	Low/Mod	9	\$ 23.99	\$ 215.91
Acacia cognata	3'	5'	1 gal	Full Sun	Low	3	\$ 21.99	\$ 65.97
Agave 'Blue Glow'	2'	3'	3/5 gal	Full/Partial	Low/Mod	8	\$ 29.99	\$ 239.92
Mimulus Jelly Bean	2'	2'	1 gal	Full/Partial	Low/Mod	8	\$ 7.99	\$ 63.92
Artemisia schmidtiana 'Silver Mound	2'	5'	1 gal	Full/Partial	Low/Mod	1	\$ 6.99	\$ 6.99
Nepeta 'Walker's Low	2'	3'	1 gal	Full/Partial	Low/Mod	10	\$ 7.99	\$ 79.90
Hesperaloe parviflora Brakelights	2'	2'	1 gal	Full Sun	Mod	6	\$ 18.99	\$ 113.94
Senecio mandraliscae	2'		3/5	Full/Partial		5	\$ 23.99	\$ 119.95
Stachys byzantina	1'	4'	3/5 gal	Full/Partial	Low/Mod	4	\$ 9.99	\$ 39.96
								\$1,217.45

Total Cost- \$9,958

Tier Two Curb Appeal



Meander footpath through fire wise plant islands

Zone 0- 0-5'

Fire safe planting, grasses pruned in fire season

Tier Two Evening Gathering

Zone 0: 0-5'

Maintain existing terraced plantings

Introduce native wildflower seeds to lawn to increase food for pollinators & seasonal interest



Tier Two Outdoor Dining

Utilizing existing furniture, assuming it's fire safe

Repurpose flagstone from existing home.



Tier Two Section



Cement fiber siding

Reflective pool removed for budget

Mounded islands for planting

Sidewalk met with decomposed granite and planting



Zone 0: 0-5'



Zone 1: 5-30'

Tier Three

\$5,000 Budget

For this design intervention we assumed the following:

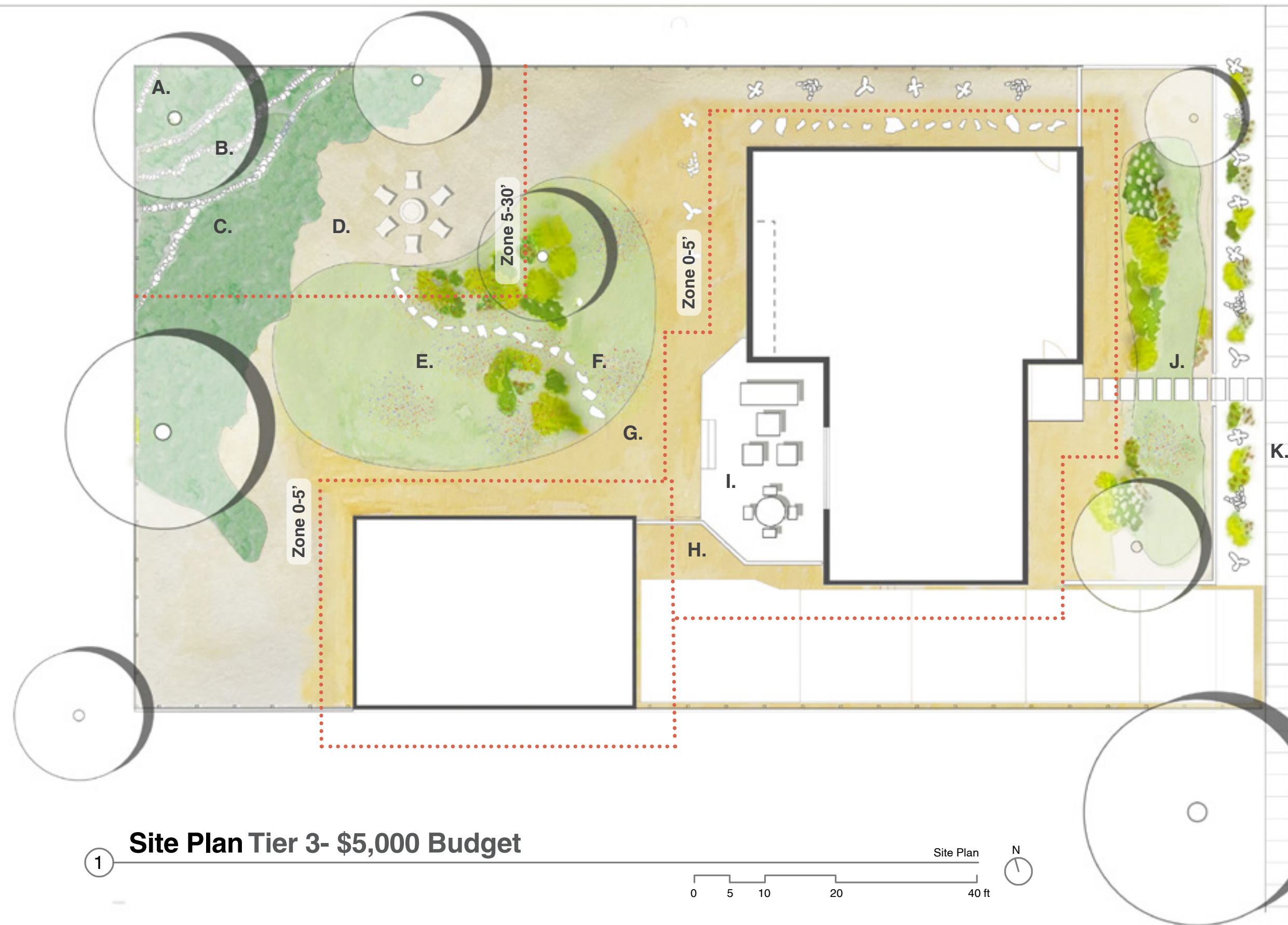
- 1. Design prioritized for curb appeal, though intervention is reduced and utilizes existing planting.**
- 2. Fence remains the same for backyard space, while only budgeting cost for front yard fencing and fencing that attaches to buildings**
- 3. Decking located in backyard remains unchanged**

Assumptions

While curb appeal is prioritized in Tier 3 as well, the scope of the design intervention is significantly reduced. Applying the same design concept, Tier 3 incorporates the existing lawn in both the front and back spaces, while introducing clusters of planting moments. The front yard also has the cinder block breezeway, while the back and side fencing remain unchanged.

Unlike Tier 1 and Tier 2, the backyard decking remains the same, as well as the exterior furniture. Any use of gravel pathway utilizes pea gravel, though the 0-5' zone was prioritized for this use.

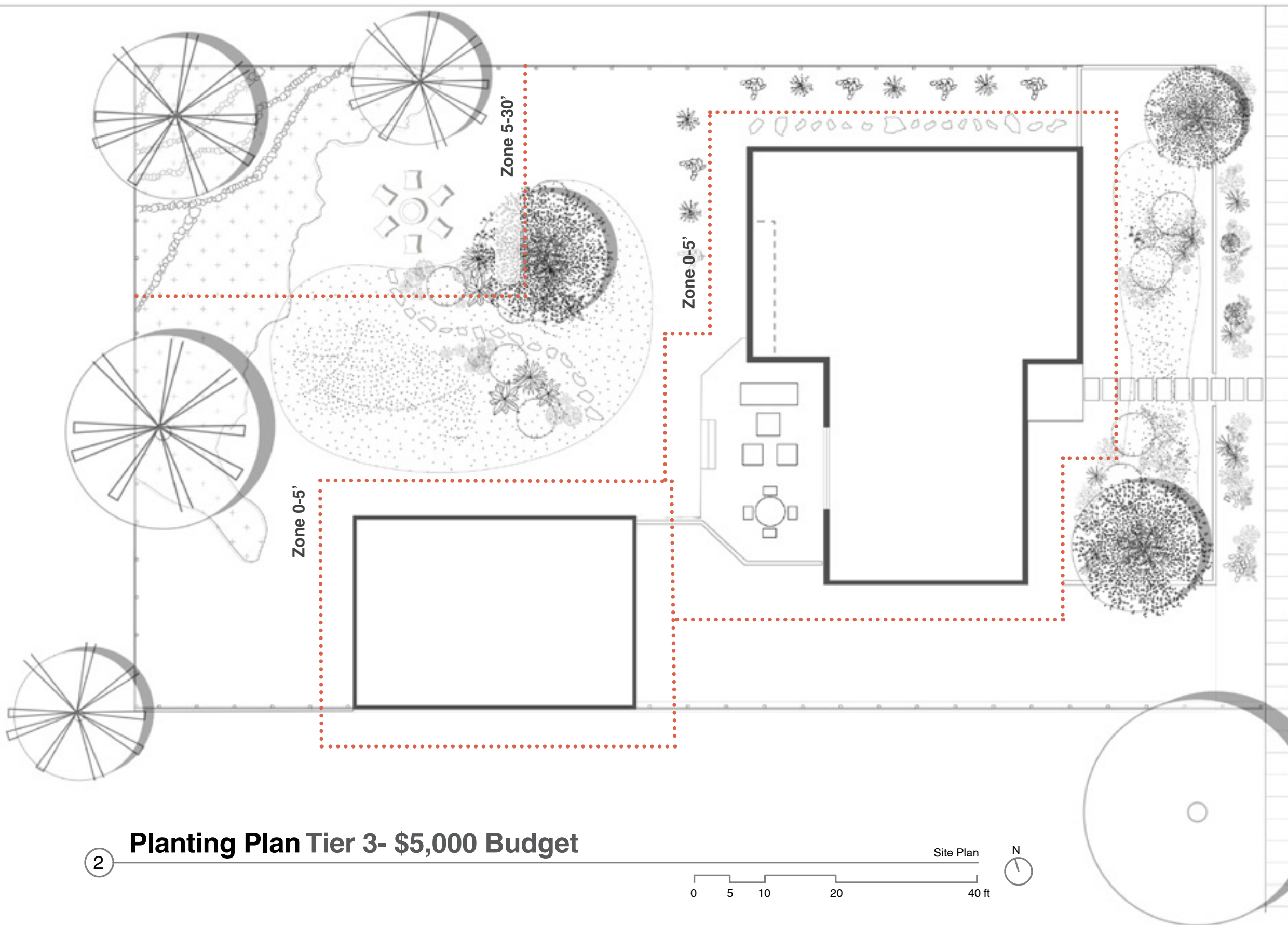
Renders finished in Lumion



- A.** Existing Fence
- B.** Existing Trees, 10 Feet Canopy Apart
- C.** Existing Terraced Planting
- D.** Backyard Firepit
- E.** Wildflowers & Existing Lawn
- F.** Repurposed Stones
- G.** 0-5' Zone Gravel Border
- H.** Breeze Block Fence
- I.** Existing Deck & Furniture
- J.** New Garden Entrance
- K.** Breeze Block Offset From Curb

Site Plan Tier 3- \$5,000 Budget





Trees

- Existing Sequoia sempervirens
- Parkinsonia 'Desert Museum'
- Quercus lobata

Shrubs

- Mimulus Jelly Bean
- Muhlenbergia rigens
- Artemisia schmidtiana 'Silver Mound'
- Westringia 'Wynabbie Highlight'
- Nepeta 'Walker's Low'

Succulents

- Yucca rostrata
- Agave x 'Blue Glow'
- Hesperaloe parviflora Brakelights

Groundcover/ Perennials

- Eschscholzia californica
- Stachys byzantina
- Wildflower see bombs

2 **Planting Plan Tier 3- \$5,000 Budget**

Site Plan



0 5 10 20 40 ft

Tier Three Budget

Full details on budget items can be viewed at our [Fire Competition Materials List](#)

Planting List / Front yard								
Plant Name	Height	Width		Sun Requirement	Water	Quantity	Itemized Cost	Total Cost
Parkinsonia 'Desert Museum'	20'	20'	15 gal	Full Sun	Low/Mod	2	\$ 95.99	\$ 191.98
Muhlenbergia rigens	4'	3'	1 gal	Full/Partial	Low/Mod	4	\$ 7.99	\$ 31.96
Agave 'Blue Glow'	2'	3'	3/5 gal	Full/Partial	Low/Mod	7	\$ 29.99	\$ 209.93
Mimulus Jelly Bean	2'	2'	1 gal	Full/Partial	Low/Mod	3	\$ 7.99	\$ 23.97
Stachys byzantina	1'	4'	1 gal	Full/Partial	Low/Mod	12	\$ 9.99	\$ 119.88
Erigeron karwinskianus	1'	4'	1 gal	Full/Partial	Low/Mod	10	\$ 6.99	\$ 69.90
								\$ 703.54

Planting List / Backyard								
Plant Name	Height	Height	Size	Sun Requirement	Water	Quantity	Itemized Cost	Total Cost
Parkinsonia 'Desert Museum'	20'	20'	15 gal	Full Sun	Low/Mod	1	\$ 95.99	\$ 95.99
Muhlenbergia rigens	4'	4'	1 gal	Full/Partial	Low/Mod	3	\$ 7.99	\$ 23.97
Agave 'Mateo'	3'	3'	3/5 gal	Full/Partial	Low/Mod	5	\$ 39.99	\$ 199.95
Agave 'Blue Glow'	2'	3'	3/5 gal	Full/Partial	Low/Mod	5	\$ 29.99	\$ 149.95
Salvia spathacea	2'	3'	1 gal	Full/Partial	Low/Mod	8	\$ 6.99	\$ 55.92
Hesperaloe parviflora	2'	2'	1 gal	Full Sun	Mod	3	\$ 18.99	\$ 56.97
Brakeights	2'	2'	1 gal	Full Sun	Mod	3	\$ 18.99	\$ 56.97
Stachys byzantina	1'	4'	3/5 gal	Full/Partial	Low/Mod	7	\$ 9.99	\$ 69.93
								\$ 652.68

Total Cost- \$4,778

Tier Two Curb Appeal

Sidewalk entrance for improved circulations

Fire safe planting, grasses pruned in fire season

Interplay of new plantings with existing lawn.

Breeze block fencing

Fence moved five feet from sidewalk to allow for planting



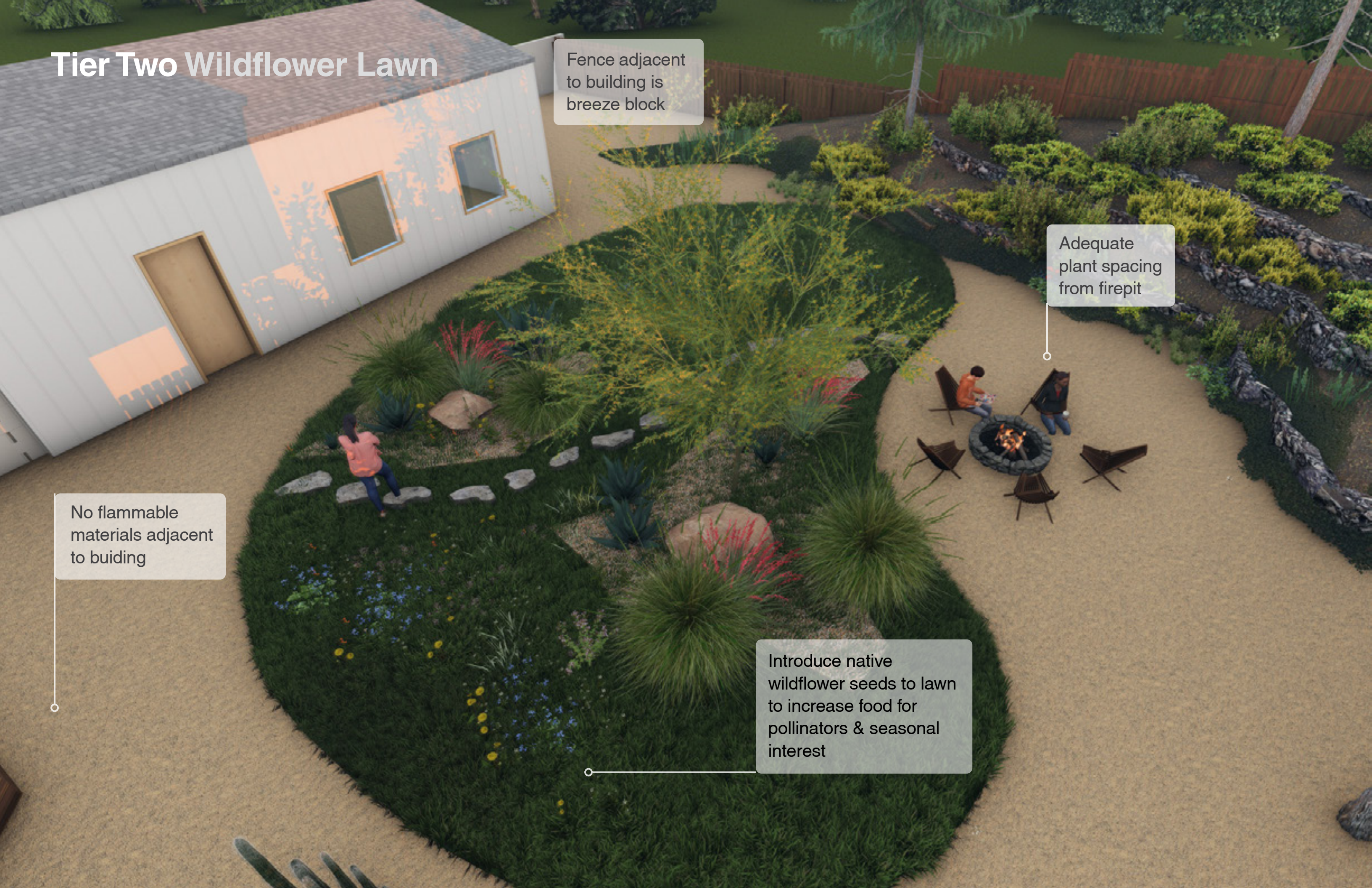
Tier Two Wildflower Lawn

Fence adjacent to building is breeze block

Adequate plant spacing from firepit

No flammable materials adjacent to buiding

Introduce native wildflower seeds to lawn to increase food for pollinators & seasonal interest



Tier Two Lush Entrance



Existing grass & wildflower planting

Zone 0- 0-5'

Tier Two Section

cement fiber siding

sidewalk met with decomped granite and planting

0-5' zone

5-30' zone

Alternative Zone 0 Drawings & Process

The next few pages are alternative options for the 0 to 5 Zone, focusing different forms and materials that could be applied.

We have also included process work showing our design thinking and sketches.

Alternative Zone O- Opt 1

Informal and Textured

In this iteration we have sketched a textured hardscape, 1" by 3' concrete pavers interlaid with a cobblestone brick. This variation and the informality ties in well with our chosen plant palette.



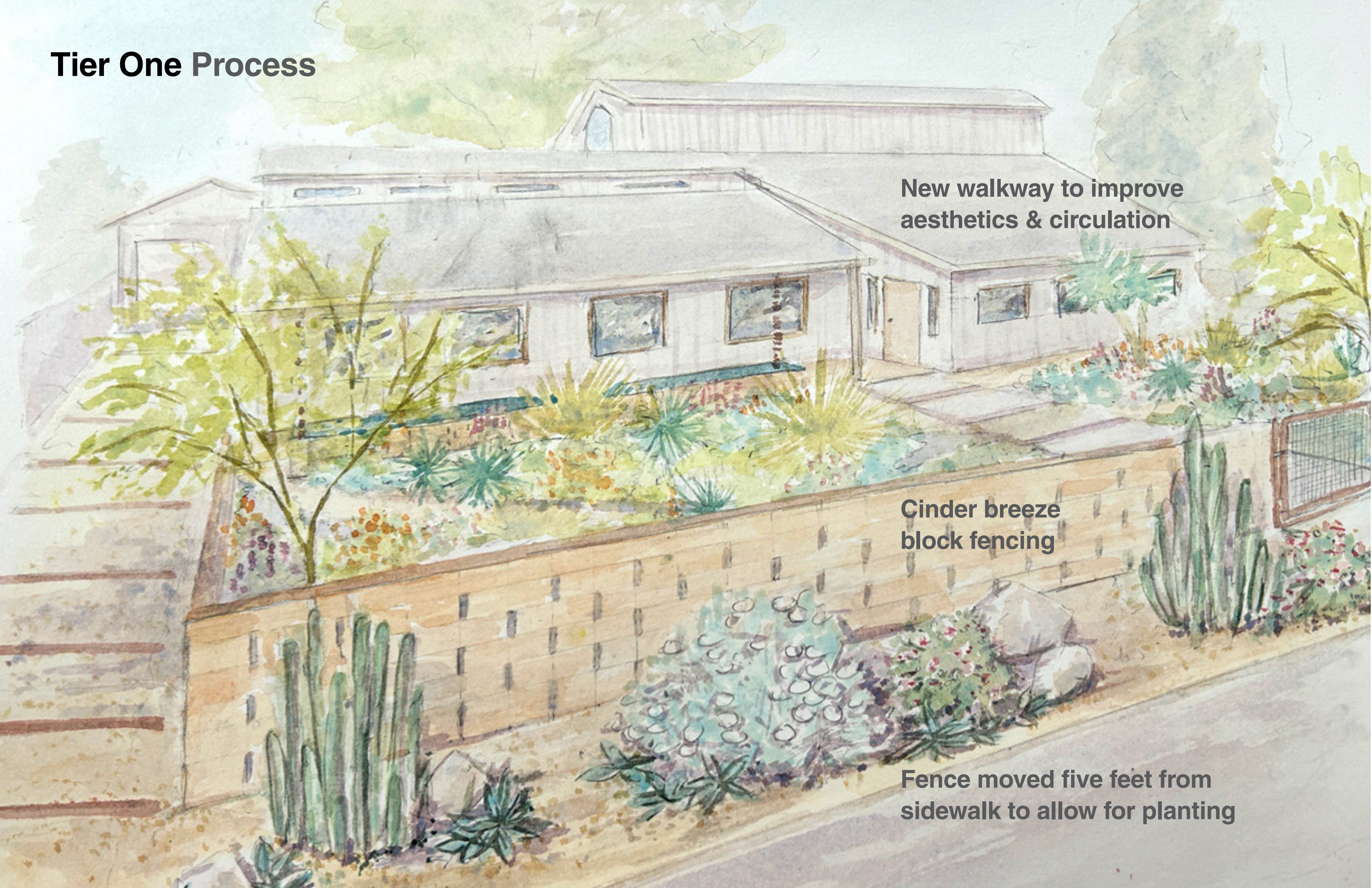
Alternative Zone O- Opt 2

Circulation Courtyard

This proposal defines the space directly adjacent to the house as a transition between the outdoors and the interior. We propose a blue flagstone long courtyard adjacent to the house, flanked by sculptural plants in pots.



Tier One Process

A watercolor architectural rendering of a single-story house with a grey roof and light-colored walls. The house features several windows and a central door. A new walkway is shown leading from the sidewalk to the front of the house. The yard is landscaped with various plants, including a large tree on the left, a cactus in the foreground, and a variety of shrubs and flowers. A cinder breeze block fence runs along the property line, separating the yard from the sidewalk. The overall style is soft and artistic, typical of a conceptual architectural drawing.

New walkway to improve aesthetics & circulation

Cinder breeze block fencing

Fence moved five feet from sidewalk to allow for planting

Tier One Process

Terraced Quiet Zone

Building upon existing grade changes we designed a terraced space with a small redwood deck, soaking pool and built in chaises to enjoy at the end of the day.

Backyard Gathering

A space designed for summer nights and winter marshmallow roasting. This gathering zone around a firepit is void of planting to keep it as safe as possible.

Outdoor Dining Zone

We maintained the existing structure but updated this areas material palette to decomposed granite, metal furniture, and corten steel steps. Space is flanked with a long barrier viewing pool.

Planted Footpath

We designed a few small footpaths that weave through out the most heavily planted areas.

Fire Competition



Tier One Process

Barrier Viewing Pools

We've designed a viewing pool/fountain that follows the 0-5' boundary along the home. The pools act as a water barrier for the home and bring a sense of peace to the space.

Planted Mounds

These mounds are planted with *Convolvulus cneorum*, *Gaura lindheimeri*, *Echinacea Butterfly 'Cleopatra*, *Nepeta 'Walker's Low*, *Erigeron karvinskianus*,

Fire Competition



Tier One Process

Rain chain

Rain chains along roofline fall into the barrier viewing pools.

