

# Living *well* with fire

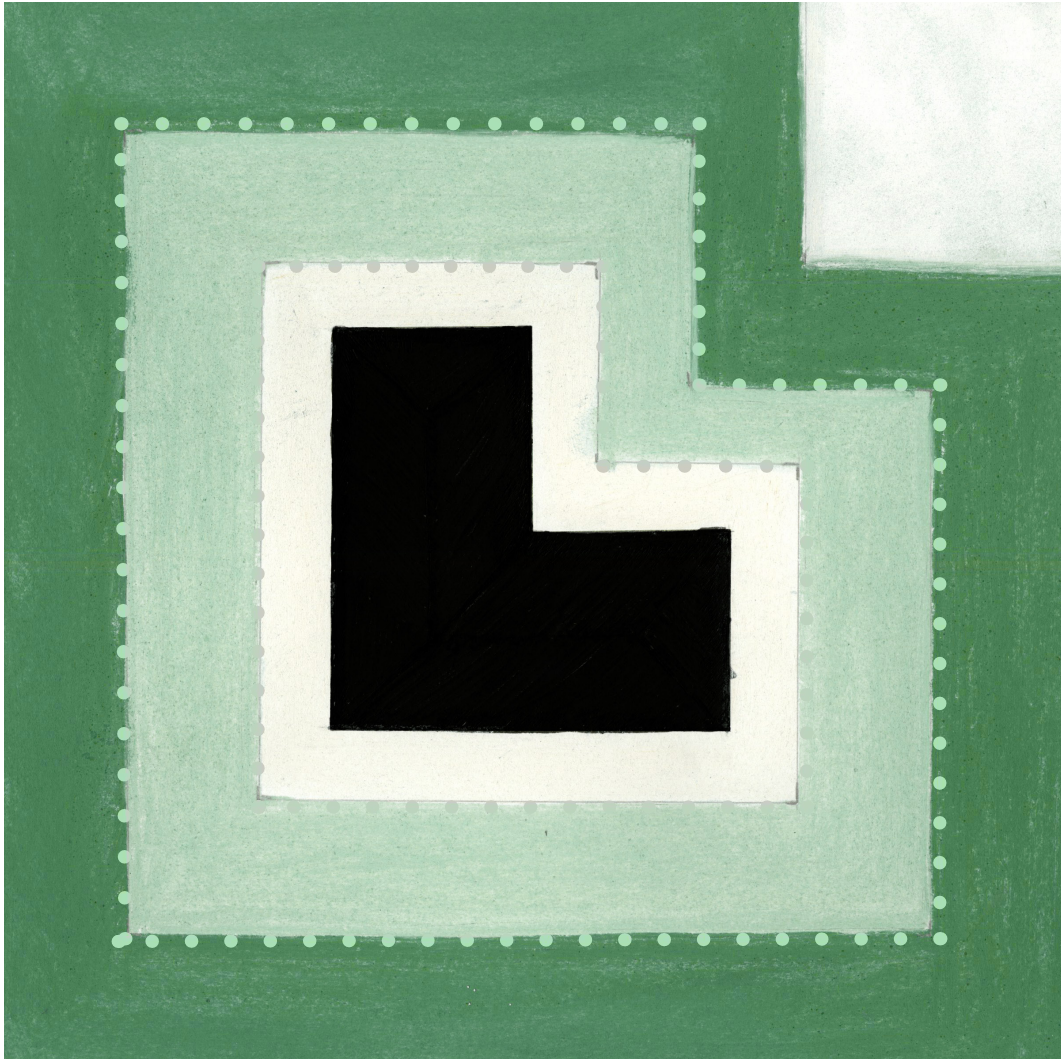


**Firesafe design competition**  
2023—2024

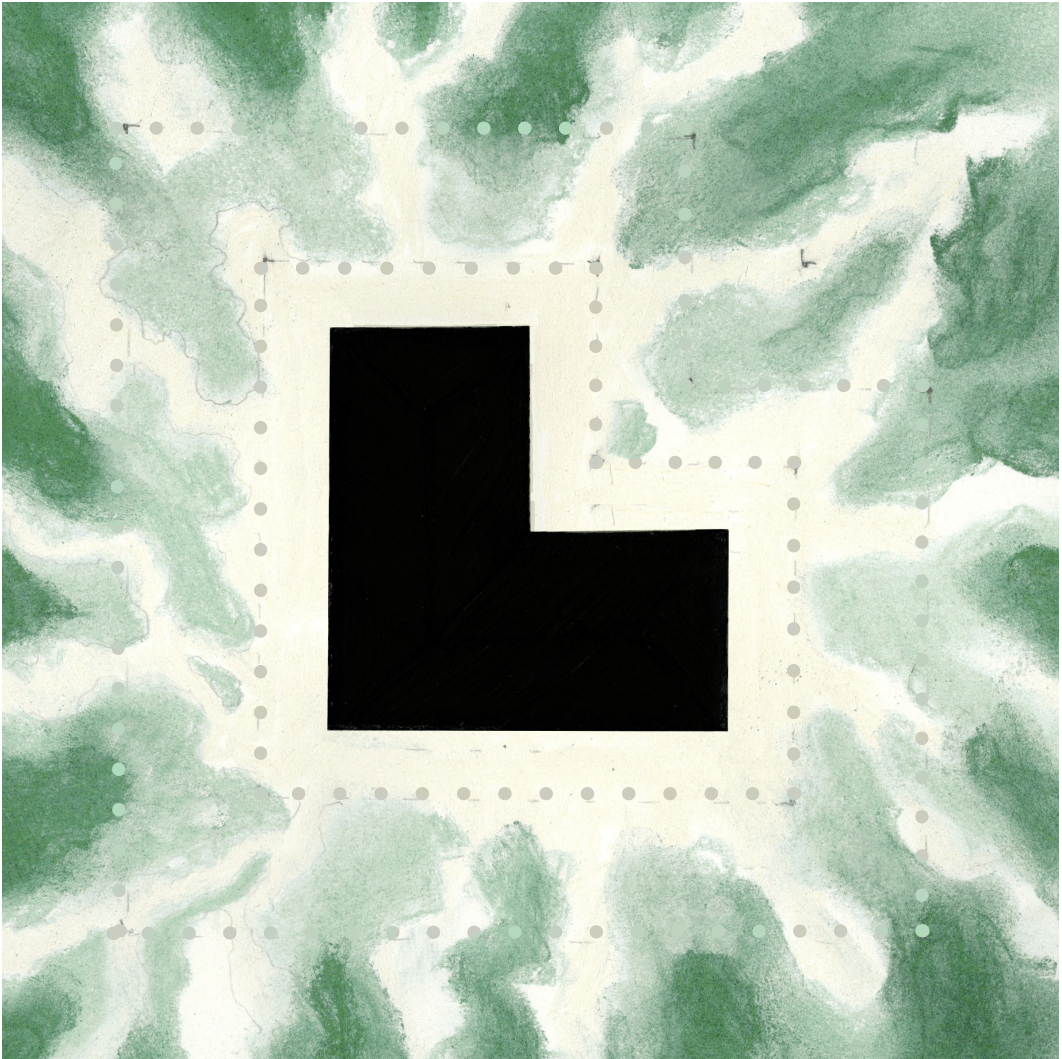


# Concept 1: Buffer & Blend

**BUFFER** .....▶ **BLEND**



**BUFFERS** around the home are critical to fire safe design... but buffers can feel like hard boundaries that break up and disconnect the landscape.

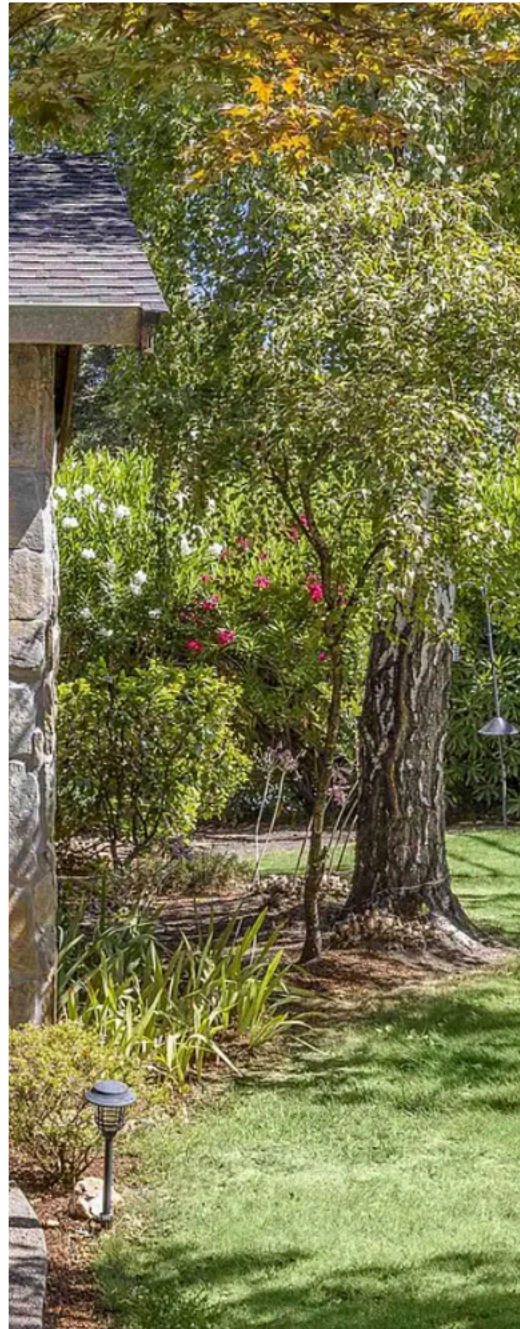


Our design uses soft edges, natural materials, and native plants to **BLEND** with the landscape, connecting the home with its surroundings while following fire safe principles.



## Concept 2: Phased growth

Phase **0** -----> Phase **1** -----> Phase **2** -----> Phase **3**



Landscaping is expensive, our design imagines implementing a landscape plan in phases beginning with the most immediate fire safety issues and allowing the homeowner to build out the rest of the design over time as funds allow.



# Phase 0: Current Condition

OVERHANGING  
BRANCHES

HIGH FLAMMABLE  
HEDGES



PLANTINGS AGAINST  
HOUSE

COMBUSTIBLE BARK MULCH



# Phase 0: High hazard

OVERHANGING  
BRANCHES CARRY FIRE TO  
ROOF

HIGH FLAMMABLE  
HEDGES CREATE  
BARRIERS FOR FIRST  
RESPONDERS



PLANTINGS AGAINST  
HOUSE ALLOW FIRE TO  
CATCH SIDING

COMBUSTIBLE BARK MULCH  
CARRIES FIRE BETWEEN PLANTINGS



# Phase 1: Low cost



DECORATIVE GRAVEL AND BOULDERS IN ZONE 0

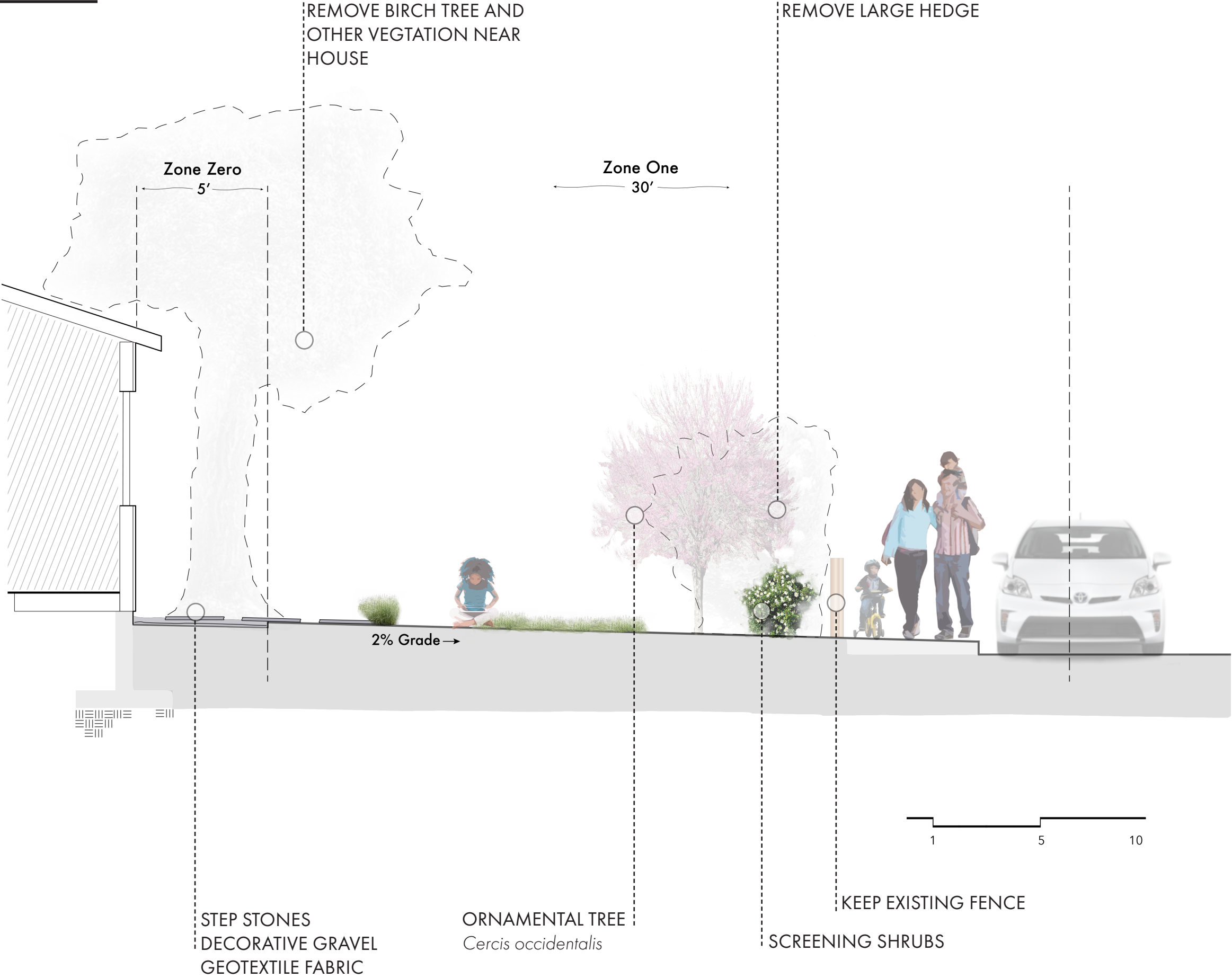
NATIVE TREES AND SHRUBS FOR CURB APPEAL

SIDING REPLACED WITH FIRE RESISTANT PRODUCTS

BEGIN RESEEDING LAWN WITH LOW MAINTENANCE NATIVE FESCUE

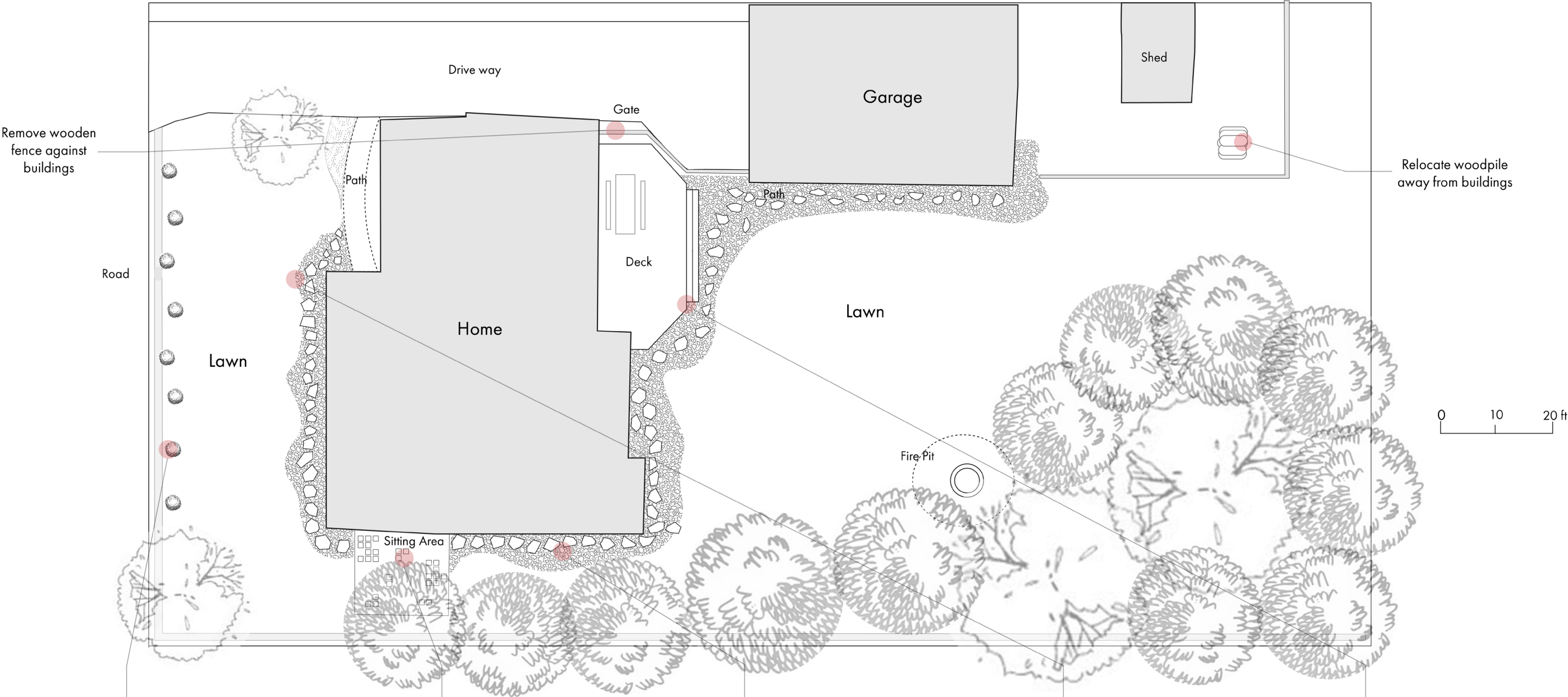


# Phase 1: Low cost





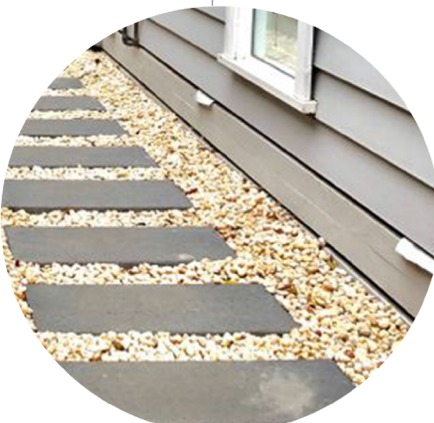
# Phase 1: Low cost



Replace Hedge with Screening Shrubs



Limb All Trees



Gravel and Flagstone Zone Zero



Blend Gravel and Lawn



Weathered Steel Deck Skirting



# Phase 2: Mid cost

TIMBER AND WIRE FENCE  
WITH SCREENING SHRUBS

DROUGHT TOLERANT  
PERENNIALS PLANTED IN  
DRIFTS

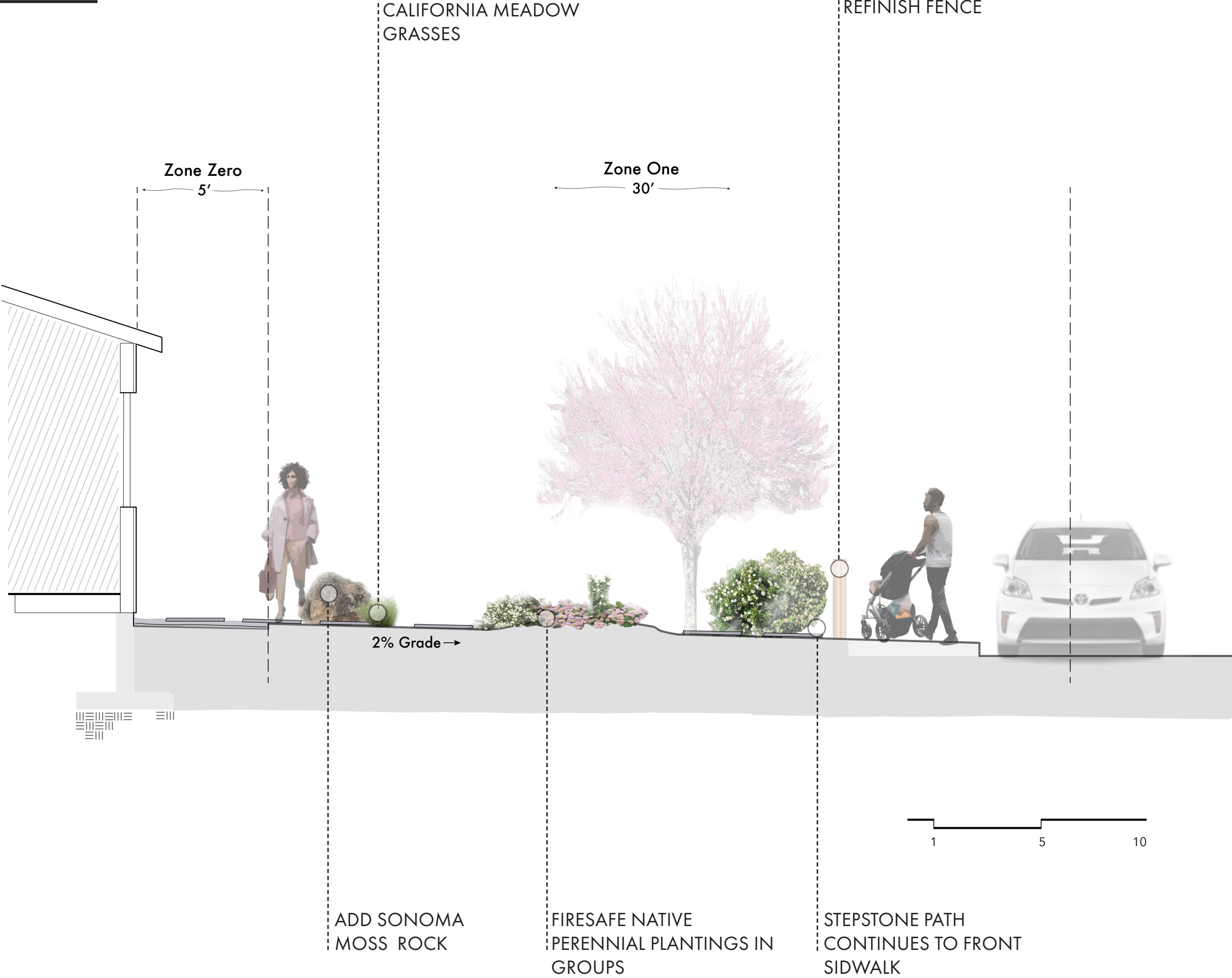


ROCK GARDENS

LAWN PARTIALLY REPLACED WITH  
CALIFORNIA MEADOW

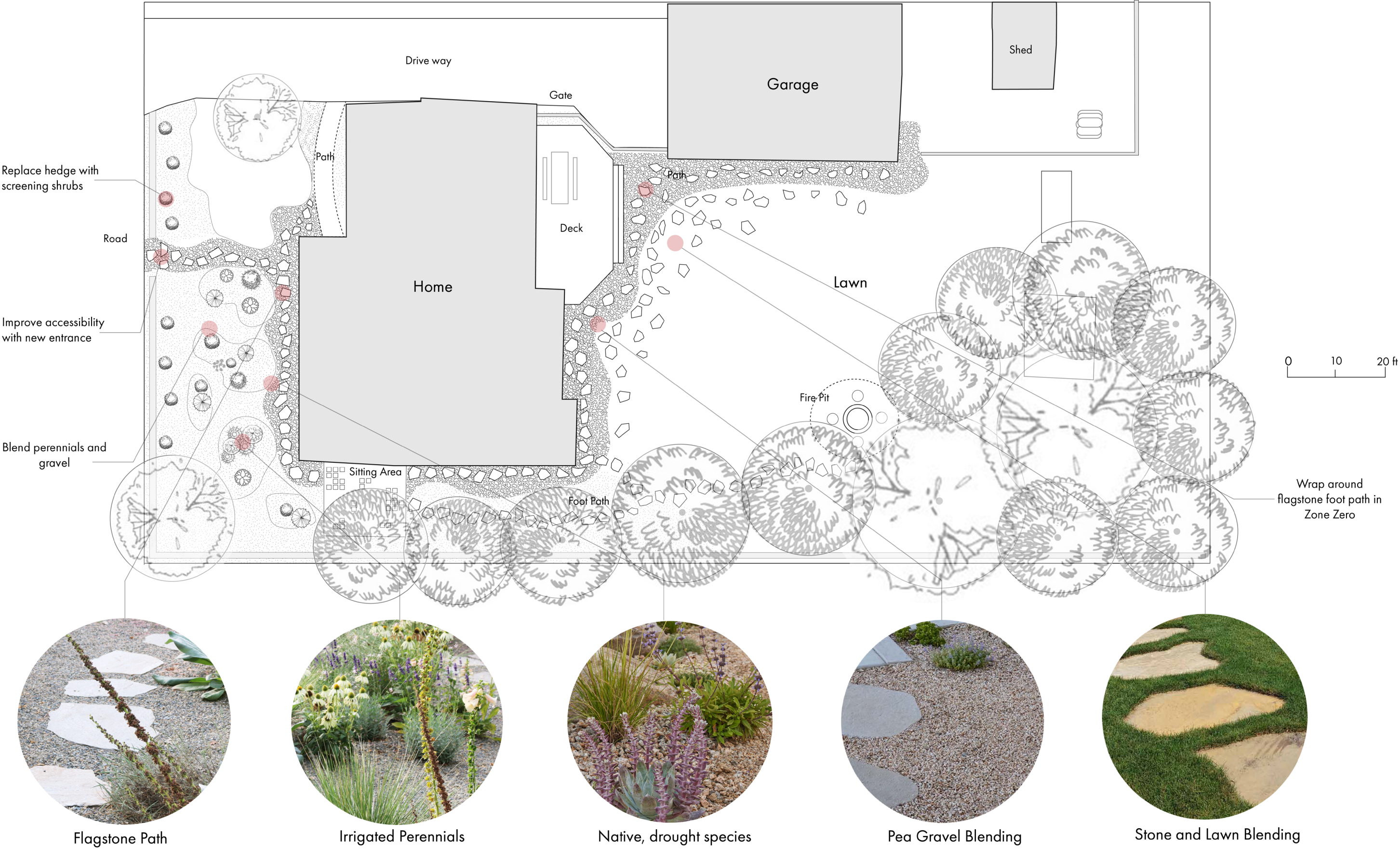


# Phase 2: Mid cost



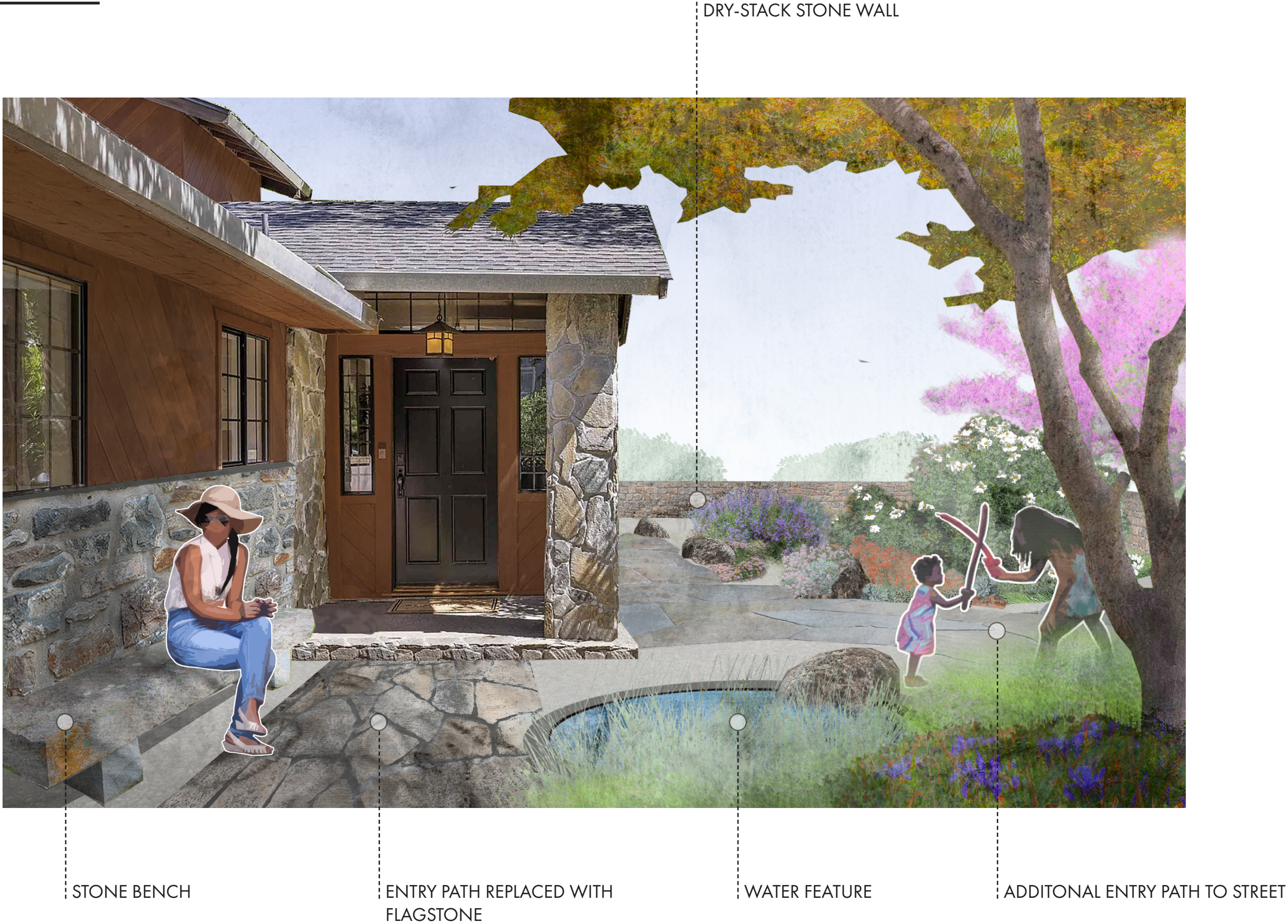


# Phase 2: Mid cost





Phase 3: Full cost



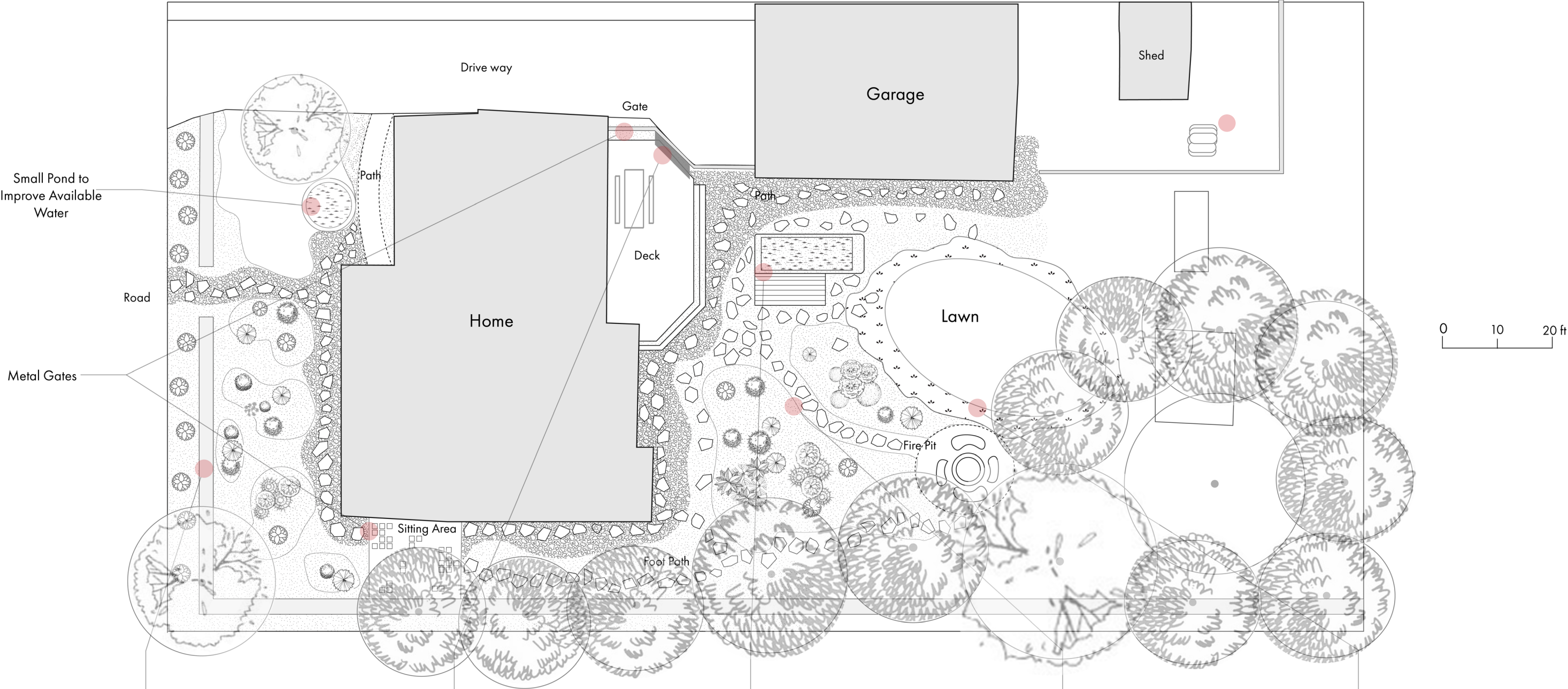


# Phase 3: Full cost





# Phase 3: Full cost



Dry Stack Rock Wall



Stone Outdoor Kitchen



Garden Infinity Fountain



Perennial and Rock Garden

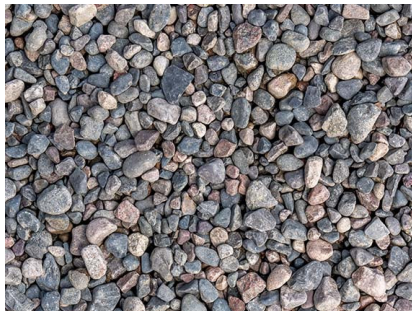


Grass and Lawn Blending



# Firesafe plants: Native Rock Garden

---



CALIFORNIA BUCKWHEAT  
*Erigonum fasciculatum*



MATILIJIA POPPY  
*Romneya coulteri*



CALIFORNIA FUSCHIA  
*Zauschneria californica*



BROADLEAF STONECROP  
*Sedum spathulifolium*



NATIVE DUDLEYA  
*Dudleya* spp.



# Firesafe plants: Polinator Paradise

COYOTE MINT  
*Monardella villosa*



SEASIDE DAISY  
*Erigeron glaucus*



FOOTHILL PENSTEMON  
*Penstemon heterophyllus*



SILVER LUPINE  
*Lupinus albus*



# Firesafe plants: California Meadow

RED FESCUE  
*Festuca rubra*



FOOTHILL SEDGE  
*Carex tumulicola*



IDAHO FESCUE  
*Festuca idahoensis*



YELLOW-EYED GRASS  
*Sisyrinchium californicum*



CLUSTERED FIELD SEDGE  
*Carex praegracilis*



YARROW  
*Achillea millifolium*



YERBA BUENA  
*Clinopodium douglasii*



# Firesafe plants: Shady Woodland

RED-OSIER DOGWOOD  
*Cornus stolonifera*



NATIVE RHODODENDRON  
*Rhododendron* spp.



DOUGLAS IRIS  
*Iris douglasiana*



WESTERN COLUMBINE  
*Aquilegia formosa*



# Firesafe plants: Trees & screening shrubs

---

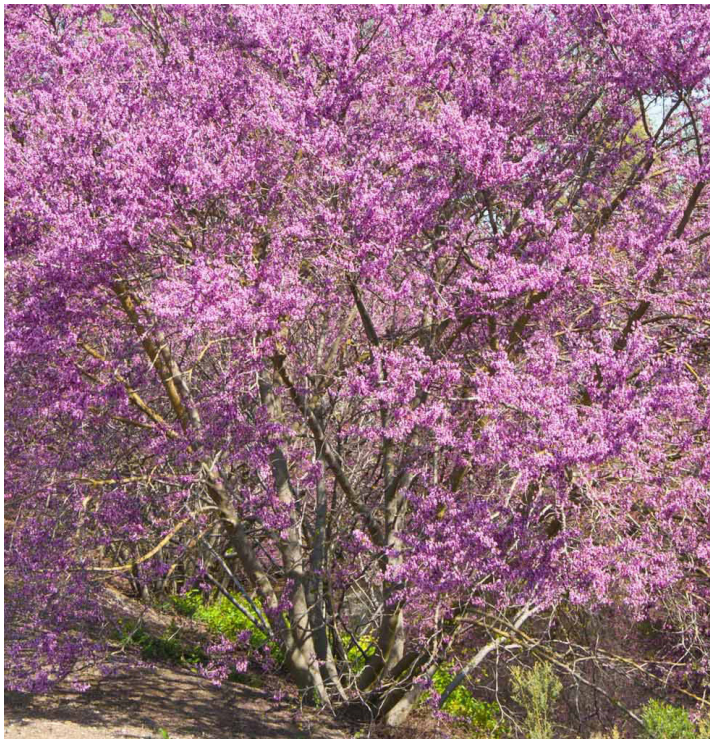
COAST LIVE OAK  
*Quercus agrifolia*



BUSH ANEMONE  
*Carpenteria californica*



WESTERN REDBUD  
*Cercis occidentalis*



SUGAR BUSH  
*Rhus ovata*





# Firesafe materials: Natural stone



BOULDERS  
*Sonoma Moss Rock*



WALL  
*Dry-Stack Bluestone*



ZONE ZERO PAVERS  
*Gravel between joints*



ZONE ONE PAVERS  
*Plants between joints*



GRAVEL  
*Screened decorative agregate*



# Estimated Costs

Costs include landscape materials only. Cost of vegetation removal installation and home hardening not included

Phase 1: \$4,887.05

Phase 2: \$9,983.09

Phase 3: \$26,514.20

Option 1: LOW COST						
ITEM	Grouping	QTY	UNIT	AMOUNT	Size	TOTAL
Pea Gravel	Hardscape	1227	Sq Ft	\$ 1.20	-	\$ 1,472.40
Flagstone	Hardscape	2	Ton	\$ 334.00	24" x 36"	\$ 668.00
Carpenteria californica	Screening Shrubs	9	3 Gal	\$ 37.50	1 Gal	\$ 337.50
Cercis occidentalis	Fire-Safe Trees	1	15 Gal	\$ 363.00	24" Box	\$ 363.00
Weathered Steel Deck Skirting	Hardscape	9	Per Unit	\$ 227.35	7' x 15.75"	\$ 2,046.15
				SUBTOTAL	\$ 4,887.05	

Option 2: MID COST						
Description	Grouping	Price	QTY	UNIT	Size	TOTAL
Pea gravel	Hardscape	\$ 1.20	1,592	Sq ft	-	1910.4
Large Flagstone	Hardscape	\$ 334.00	2	Ton	24" x 36"	668
Small Flagstone	Hardscape	\$ 300.00	1	Ton	12" x 12"	300
Boulders	Hardscape	\$ 88.00	10	Per Unit	4 x 2	880
Weathered Steel Deck Skirting	Hardscape	\$ 227.35	5	Per Unit	7' x 15.75"	1136.75
Achillea spp.	Meadow	\$ 10.36	4	Per Unit	3.25 inch	41.44
Aquilegia formosa	Understory Perennial	\$ 15.00	10	Per Unit	1 Gal	150
Carex spp.	Meadow	\$ 21.00	10	Per Unit	3.5 inch	210
Carpenteria californica	Screening Shrubs	\$ 37.50	9	Per Unit	1 Gal	337.5
Clinopodium douglasii	Meadow	\$ 12.00	20	Per Unit	1 Gal	240
Cercis occidentalis	Fire-Safe Trees	\$ 363.00	1	Per Unit	24" Box	363
Cornus stolonifera	Understory Shrub	\$ 13.00	15	Per Unit	1 Gal	195
Dudleya spp.	Sunny Perennials	\$ 14.00	20	Per Unit	1 Gal	280
Erigonum fasciculatum	Sunny Perennials	\$ 14.00	12	Per Unit	1 Gal	168
Erigeron glaucus	Sunny Perennials	\$ 15.00	10	Per Unit	4 inch	150
Festuca spp.	Meadow	\$ 3.75	18	Per Unit	1/8 oz	67.5
Frangula californica	Screening Shrubs	\$ 20.00	4	Per Unit	2 Gal	80
Iris douglasiana	Understory Perennial	\$ 11.00	20	Per Unit	1 Gal	220
Lupine spp.	Sunny Perennials	\$ 7.00	15	Per Unit	3 inch	105
Monardella villosa	Sunny Perennials	\$ 15.00	8	Per Unit	5 inch	120
Penstemon spp.	Sunny Perennials	\$ 12.00	15	Per Unit	4 inch	180
Quercus agrifolia	Fire-Safe Trees	\$ 595.00	1	Per Unit	15 Gal	595
Rhododendron spp.	Understory Shrub	\$ 24.50	7	Per Unit	2 gal	171.5
Romneya coulteri	Sunny Perennials	\$ 28.00	15	Per Unit	3.5 inch	420
Rhus ovata	Screening Shrubs	\$ 20.00	20	Per Unit	1 gal	400
Sisyrinchium spp.	Meadow	\$ 15.00	20	Per Unit	1 quart	300
Sidalcea malviflora	Sunny Perennials	\$ 13.00	8	Per Unit	3 inch	104
Sedum spathulifolium	Sunny Perennials	\$ 5.00	10	Per Unit	2.5 inch	50
Zauschneria californica	Sunny Perennials	\$ 7.00	20	Per Unit	3 inch	140
				SUBTOTAL	\$9,983.09	

Option 3: High Cost						
Item	Grouping	Price	QTY	UNIT	Size	TOTAL
Pea gravel	Hardscape	\$ 1.20	3,783	Sq ft	-	4539.6
Large Flagstone	Hardscape	\$ 334.00	3	Ton	24" x 36"	1002
Small Flagstone	Hardscape	\$ 300.00	1	Ton	12" x 12"	300
Boulders	Hardscape	\$ 88.00	10	Per Unit	4 x 2	880
Weathered Steel Deck Skirting	Hardscape	\$ 227.35	5	Per Unit	7' x 15.75"	1136.75
Dry Stack Rock Wall	Hardscape	\$ 3,850.00	1	Per Unit	-	3850
Metal Gates	Fencing	\$ 1,150.00	2	Per Unit	40" x 67.5"	2300
Small Pond	Water Feature	\$ 1,478.00	1	Per Unit	-	1478
Garden Infinity Pool	Water Feature	\$ 3,700.00	1	Per Unit	-	3700
Achillea spp.	Meadow	\$ 10.36	10	Per Unit	3.25 inch	103.6
Aquilegia formosa	Understory Perennial	\$ 15.00	25	Per Unit	1 Gal	375
Carex spp.	Meadow	\$ 12.00	25	Per Unit	3.5 inch	300
Carpenteria californica	Screening Shrubs	\$ 37.50	11	Per Unit	1 Gal	412.5
Clinopodium douglasii	Meadow	\$ 12.00	35	Per Unit	1 Gal	420
Cercis occidentalis	Fire-Safe Trees	\$ 363.00	1	Per Unit	24" Box	363
Cornus stolonifera	Understory Shrub	\$ 13.00	25	Per Unit	1 Gal	325
Dudleya spp.	Sunny Perennials	\$ 14.00	30	Per Unit	1 Gal	420
Erigonum fasciculatum	Sunny Perennials	\$ 14.00	22	Per Unit	1 Gal	308
Erigeron glaucus	Sunny Perennials	\$ 15.00	25	Per Unit	4 inch	375
Festuca spp.	Meadow	\$ 3.75	25	Per Unit	1/8 oz	93.75
Frangula californica	Screening Shrubs	\$ 20.00	5	Per Unit	2 Gal	100
Iris douglasiana	Understory Perennial	\$ 11.00	25	Per Unit	1 Gal	275
Lupine spp.	Sunny Perennials	\$ 7.00	25	Per Unit	3 inch	175
Monardella villosa	Sunny Perennials	\$ 15.00	12	Per Unit	5 inch	180
Penstemon spp.	Sunny Perennials	\$ 12.00	15	Per Unit	4 inch	180
Quercus agrifolia	Fire-Safe Trees	\$ 595.00	1	Per Unit	15 Gal	595
Rhododendron spp.	Understory Shrub	\$ 24.50	14	Per Unit	2 gal	343
Romneya coulteri	Sunny Perennials	\$ 28.00	18	Per Unit	3.5 inch	504
Rhus ovata	Screening Shrubs	\$ 20.00	25	Per Unit	1 gal	500
Sisyrinchium spp.	Meadow	\$ 15.00	28	Per Unit	1 quart	420
Sidalcea malviflora	Sunny Perennials	\$ 13.00	20	Per Unit	3 inch	260
Sedum spathulifolium	Sunny Perennials	\$ 5.00	25	Per Unit	2.5 inch	125
Zauschneria californica	Sunny Perennials	\$ 7.00	25	Per Unit	3 inch	175
				SUBTOTAL	\$26,514.20	















